

US009260657B2

(12) **United States Patent**
Wu et al.

(10) **Patent No.:** **US 9,260,657 B2**
(45) **Date of Patent:** **Feb. 16, 2016**

(54) **CHRYSENE COMPOUNDS FOR LUMINESCENT APPLICATIONS**
(75) Inventors: **Weishi Wu**, Landenberg, PA (US); **Norman Herron**, Newark, DE (US); **Vsevolod Rostovtsev**, Swarthmore, PA (US); **Jeffrey A. Merlo**, Wilmington, DE (US); **Weiyang Gao**, Landenberg, PA (US)

(73) Assignee: **E I DU PONT DE NEMOURS AND COMPANY**, Wilmington, DE (US)

(*) Notice: Subject to any disclaimer, the term of this patent is extended or adjusted under 35 U.S.C. 154(b) by 1156 days.

(21) Appl. No.: **13/265,025**

(22) PCT Filed: **May 19, 2010**

(86) PCT No.: **PCT/US2010/035364**

§ 371 (c)(1),
(2), (4) Date: **Oct. 18, 2011**

(87) PCT Pub. No.: **WO2010/135403**

PCT Pub. Date: **Nov. 25, 2010**

(65) **Prior Publication Data**
US 2012/0037898 A1 Feb. 16, 2012

Related U.S. Application Data

(60) Provisional application No. 61/179,405, filed on May 19, 2009.

(51) **Int. Cl.**
H01L 51/54 (2006.01)
C07D 209/82 (2006.01)
H01L 51/46 (2006.01)
C07C 211/61 (2006.01)
C09K 11/06 (2006.01)
C07D 209/86 (2006.01)

(Continued)

(52) **U.S. Cl.**
CPC **C09K 11/06** (2013.01); **C07C 211/61** (2013.01); **C07D 209/86** (2013.01); **C09B 57/00** (2013.01); **C09B 57/001** (2013.01); **C09B 57/008** (2013.01); **H01L 51/006** (2013.01); **C07C 2103/48** (2013.01); **C09K 2211/1007** (2013.01); **C09K 2211/1014** (2013.01); **H01L 51/0054** (2013.01)

(58) **Field of Classification Search**
None
See application file for complete search history.

(56) **References Cited**

U.S. PATENT DOCUMENTS

4,043,311 A 8/1977 Bieri
5,247,190 A 9/1993 Friend et al.

(Continued)

FOREIGN PATENT DOCUMENTS

EP 443861 B1 7/1995
EP 1061112 A1 12/2000

(Continued)

OTHER PUBLICATIONS

Beckmann et al., "Methyl Reorientation in Solid 3-ethylchrysene and 3-isopropylchrysene," Solid State Nuclear Magnetic Resonance, 1998; vol. 12; pp. 251-256.

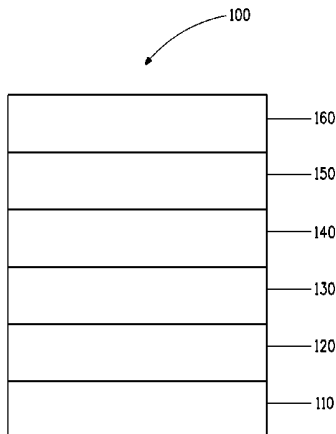
(Continued)

Primary Examiner — J. L. Yang

(57) **ABSTRACT**

This invention relates to chrysene compounds that are useful in electroluminescent applications. It also relates to electronic devices in which the active layer includes such a chrysene compound.

20 Claims, 2 Drawing Sheets



- (51) **Int. Cl.**
C09B 57/00 (2006.01)
H01L 51/00 (2006.01)

(56) **References Cited**

U.S. PATENT DOCUMENTS

- 5,408,109 A 4/1995 Heeger et al.
6,670,645 B2 12/2003 Grushin et al.
6,852,429 B1 2/2005 Li et al.
6,875,524 B2 4/2005 Hatwar et al.
7,075,102 B2 7/2006 Grushin et al.
7,173,131 B2 2/2007 Saitoh et al.
7,358,409 B2 4/2008 Saitoh et al.
7,375,250 B2 5/2008 Saitoh et al.
7,491,450 B2 2/2009 Okinaka et al.
7,651,788 B2 1/2010 Seo et al.
7,709,104 B2 5/2010 Saitoh et al.
2002/0076576 A1 6/2002 Li
2003/0072966 A1 4/2003 Hosokawa et al.
2003/0138657 A1 7/2003 Li
2004/0102577 A1 5/2004 Hsu et al.
2004/0106003 A1 6/2004 Chen et al.
2004/0121184 A1 6/2004 Thompson et al.
2004/0127637 A1 7/2004 Hsu et al.
2005/0031898 A1 2/2005 Li et al.
2005/0064233 A1 3/2005 Matsuura et al.
2005/0158577 A1 7/2005 Ishibashi et al.
2005/0184287 A1 8/2005 Herron et al.
2005/0205860 A1 9/2005 Hsu et al.
2006/0033421 A1 2/2006 Matsuura et al.
2006/0052641 A1 3/2006 Funahashi
2006/0103298 A1 5/2006 Lee
2006/0113528 A1 6/2006 Okinaka et al.
2006/0115678 A1 6/2006 Saitoh et al.
2006/0121312 A1 6/2006 Yamada et al.
2006/0152146 A1 7/2006 Funahashi
2006/0159838 A1 7/2006 Kowalski et al.
2006/0194074 A1 8/2006 Funahashi
2006/0210830 A1 9/2006 Funahashi
2006/0267488 A1 11/2006 Saitoh et al.
2007/0063638 A1 3/2007 Tokairin et al.
2007/0114917 A1 5/2007 Funahashi
2007/0155991 A1 7/2007 Funahashi
2007/0236137 A1 10/2007 Funahashi
2007/0255076 A1 11/2007 Ito et al.
2007/0292713 A9 12/2007 Dobbs et al.
2007/0298530 A1 12/2007 Feehery
2008/0049413 A1 2/2008 Jinde et al.
2008/0071049 A1 3/2008 Radu et al.
2008/0191614 A1 8/2008 Kim et al.
2008/0233433 A1 9/2008 Igarashi et al.
2008/0286605 A1 11/2008 Takeda
2008/0303425 A1 12/2008 Rostovtsev et al.
2008/0303428 A1 12/2008 Rostovtsev et al.
2008/0315754 A1 12/2008 Kawamura et al.
2009/0058279 A1 3/2009 Takeda
2009/0134781 A1 5/2009 Jang et al.
2011/0147718 A1 6/2011 Howard, Jr. et al.

FOREIGN PATENT DOCUMENTS

- EP 1561794 A1 8/2005
EP 2067766 A1 6/2009
EP 2067767 A1 6/2009
JP 07249490 A 9/1995
JP 2004010550 A 1/2004

- JP 2006052323 A 2/2006
JP 2006151844 A 6/2006
JP 2006219392 A 8/2006
JP 2007186449 A 7/2007
JP 2009161470 A 7/2009
KR 1020090046731 A 5/2009
KR 1020090086015 A 8/2009
KR 1020090086920 A 8/2009
KR 1020090093897 A 9/2009
WO 03040257 A1 5/2003
WO 03063555 A1 7/2003
WO 2004016710 A1 2/2004
WO 2005052027 A1 6/2005
WO 2006025273 A1 3/2006
WO 2007021117 A1 2/2007
WO 2007100096 A1 9/2007
WO 2007105917 A1 9/2007
WO 2007108666 A1 9/2007
WO 2008149968 A1 12/2008
WO 2009018009 A1 2/2009
WO 2009028902 A2 3/2009
WO 2009055628 A1 4/2009

OTHER PUBLICATIONS

- Gustafsson et al., "Flexible Light-Emitting Diodes Made From Soluble Conducting Polymers," *Nature*, 1992, vol. 357, pp. 477-479.
Kodomari et al., "Selective Halogenation of Aromatic Hydrocarbons," *Journal of Organic Chemistry*, 1988, vol. 53, p. 2093.
Markus et al.—*Electronics and Nucleonics Dictionary*, pp. 470-471 & 476 (McGraw-Hill 1966).
Mueller et al., "Synthesis and Characterization of Soluble Oligo(9,10-anthrylene)s," *Chemische Berichte*, 1994, 127, pp. 437-444.
Negishi et al.; III.2.15 Palladium Catalyzed Conjugated Substitution; *Handbook of Organopalladium Chemistry for Organic Synthesis*, 2000, vol. 1, pp. 767-789.
Wang—*Photoconductive Materials*, Kirk-Othmer Encyclopedia of Chemical Technology, Fourth Edition, 1996, vol. 18, pp. 837-860.
International Search Report Korean Intellectual Property Office, Daejeon, Republic of Korea, Hyun Shik Oh, Authorized Officer, Dec. 24, 2010, in PCT/US10/035364, PCT counterpart of co-pending U.S. Appl. No. 13/265,025.
International Search Report, European Patent Office, Rijswijk NL, in PCT/2008/063811, PCT copending U.S. Appl. No. 12/121,883, Csaba A. Nemes, Authorized Officer, Jul. 29, 2008.
International Search Report, European Patent Office, Rijswijk NL, in PCT/2008/065091, PCT copending U.S. Appl. No. 12/129,760, Alina Sen, Authorized Officer, Oct. 23, 2008.
International Search Report, European Patent Office, Rijswijk NL, in PCT/2008/065187, PCT copending U.S. Appl. No. 12/129,753, Cecile Vanier, Authorized Officer, Feb. 10, 2008.
International Search Report, Korean Intellectual Property Office, Daejeon, Republic of Korea, in PCT/2009/065163, PCT copending U.S. Appl. No. 13/120,001, Hyun Shik Oh, Authorized Officer, May 19, 2010.
International Search Report, Korean Intellectual Property Office, Daejeon, Republic of Korea, in PCT/2009/068928, PCT copending U.S. Appl. No. 12/643,511, Hyun Shik Oh, Authorized Officer, Aug. 17, 2010.
International Search Report, Korean Intellectual Property Office, Daejeon, Republic of Korea, in PCT/2009/068956, PCT copending U.S. Appl. No. 12/643,487, Hyun Shik Oh, Authorized Officer, Sep. 6, 2010.
International Search Report, Korean Intellectual Property Office, Daejeon, Republic of Korea, in PCT/2010/040578, PCT copending application, Hyun Shik Oh, Authorized Officer, Feb. 11, 2011.

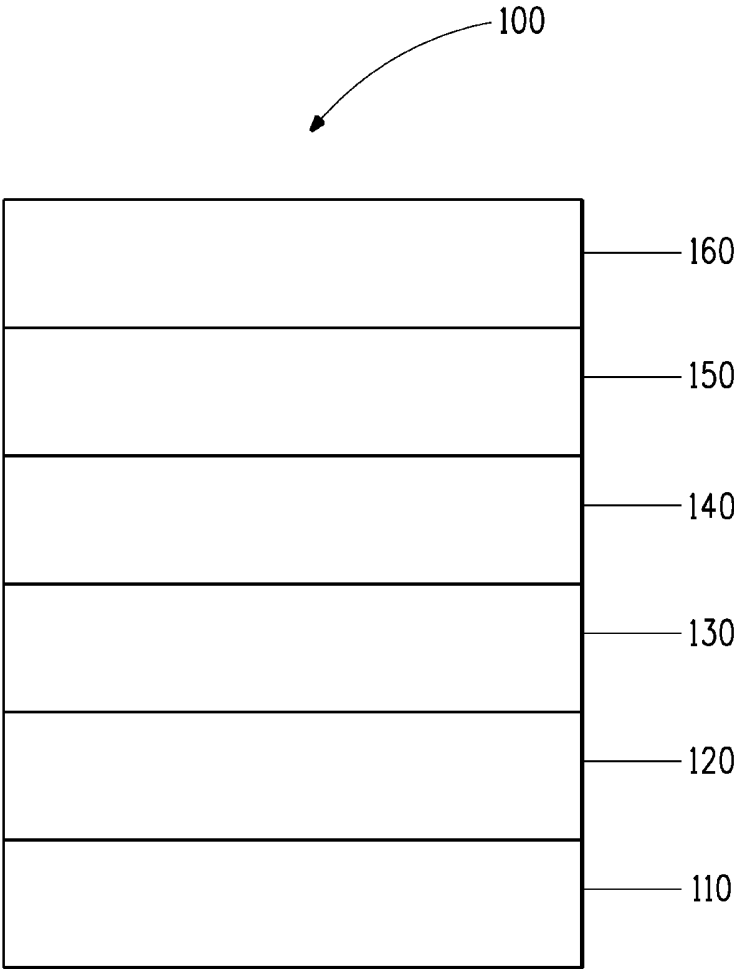


FIG. 1

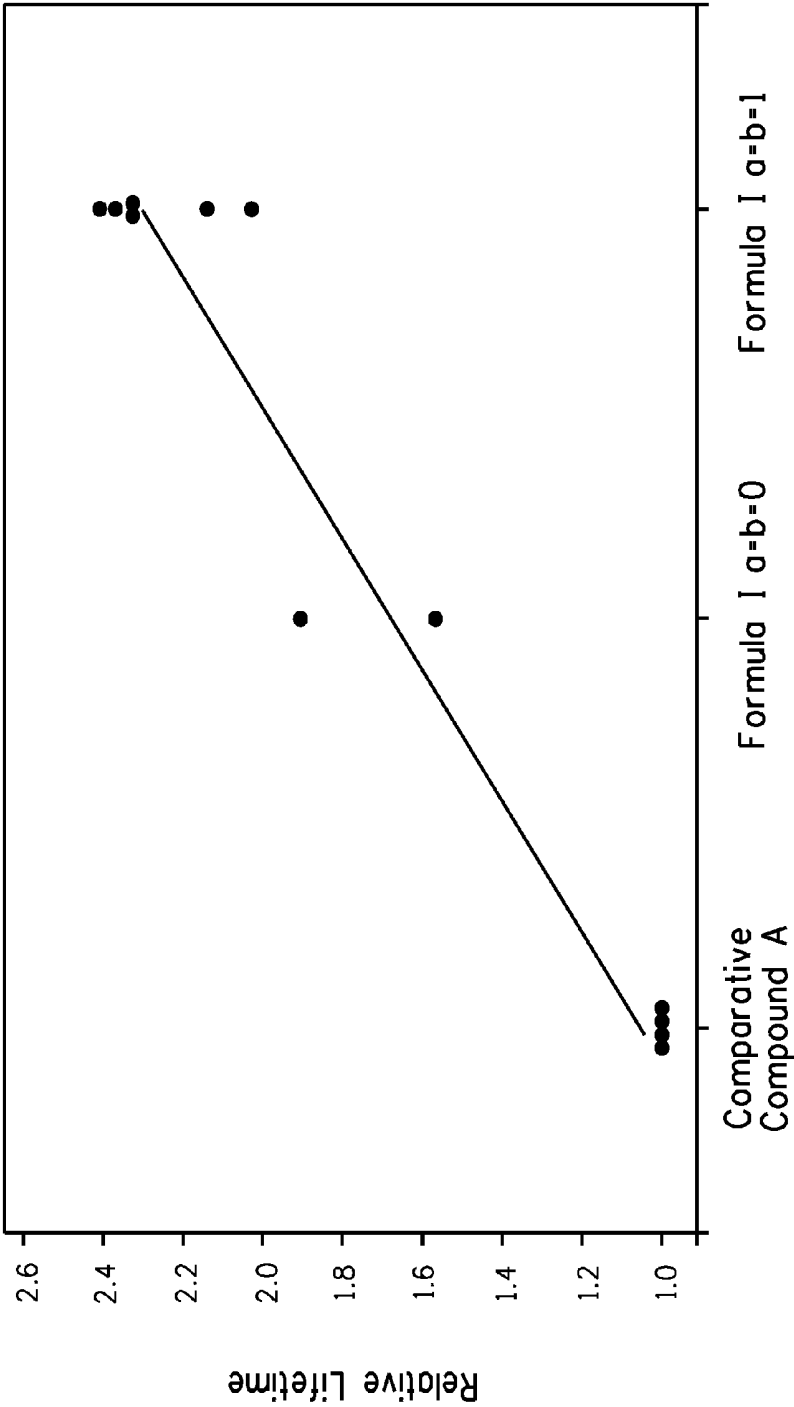


FIG. 2

CHRYSENE COMPOUNDS FOR LUMINESCENT APPLICATIONS

RELATED APPLICATION

This application claims priority under 35 U.S.C. §119(e) from Provisional Application No. 61/179,405 filed May 19, 2009 which is incorporated by reference in its entirety.

BACKGROUND

1. Field of the Disclosure

This invention relates to electroluminescent chrysene compounds. It also relates to electronic devices in which the active layer includes such a chrysene compound.

2. Description of the Related Art

Organic electronic devices that emit light, such as light-emitting diodes that make up displays, are present in many different kinds of electronic equipment. In all such devices, an organic active layer is sandwiched between two electrical contact layers. At least one of the electrical contact layers is light-transmitting so that light can pass through the electrical contact layer. The organic active layer emits light through the light-transmitting electrical contact layer upon application of electricity across the electrical contact layers.

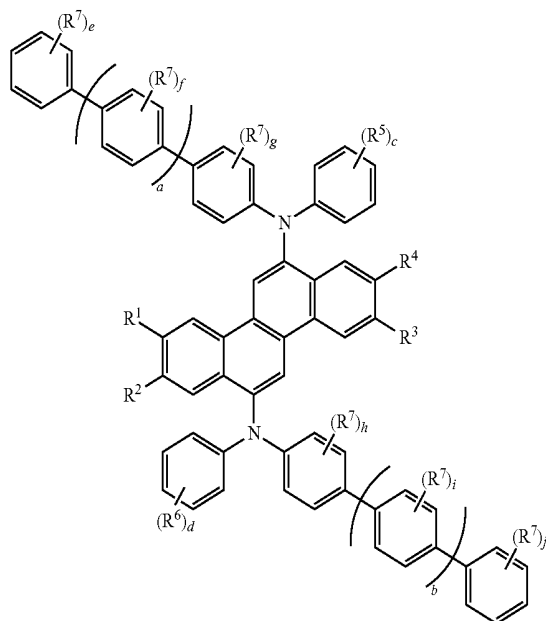
It is well known to use organic electroluminescent compounds as the active component in light-emitting diodes. Simple organic molecules such as anthracene, thiadiazole derivatives, and coumarin derivatives are known to show electroluminescence. Semiconductive conjugated polymers have also been used as electroluminescent components, as has been disclosed in, for example, U.S. Pat. No. 5,247,190, U.S. Pat. No. 5,408,109, and Published European Patent Application 443 861.

However, there is a continuing need for electroluminescent compounds.

SUMMARY

There is provided a compound having Formula I:

Formula I



wherein:

R^1 , R^2 , R^3 and R^4 are the same or different and are selected from the group consisting of H, D, and alkyl, where R^1 and R^2 groups or R^3 and R^4 groups may be joined together to form a 5- or 6-membered aliphatic ring;

R^5 and R^6 are the same or different and are selected from the group consisting of D, alkyl groups, silyl groups, m-phenyl, o-phenyl, p-phenyl, m-N-carbazolyl, and p-N-carbazolyl;

R^7 is the same or different at each occurrence and is selected from the group consisting of D, alkyl groups, silyl groups, phenyl, and biphenyl, or two adjacent R^7 groups can join together to form a naphthyl or fluorenyl group;

a and b are the same or different and are an integer from 0-10;

c and d are the same or different and are an integer from 1-5;

f, g, h, and i, are the same or different at each occurrence and are an integer from 0-4; and

e and j are the same or different at each occurrence and are an integer from 0-5.

There is also provided an electronic device comprising an active layer comprising the compound of Formula I.

BRIEF DESCRIPTION OF THE DRAWINGS

Embodiments are illustrated in the accompanying figures to improve understanding of concepts as presented herein.

FIG. 1 includes an illustration of one example of an organic electronic device.

FIG. 2 includes a graph of relative device lifetimes.

Skilled artisans appreciate that objects in the figures are illustrated for simplicity and clarity and have not necessarily been drawn to scale. For example, the dimensions of some of the objects in the figures may be exaggerated relative to other objects to help to improve understanding of embodiments.

DETAILED DESCRIPTION

Many aspects and embodiments are disclosed herein and are exemplary and not limiting. After reading this specification, skilled artisans appreciate that other aspects and embodiments are possible without departing from the scope of the invention.

Other features and benefits of any one or more of the embodiments will be apparent from the following detailed description, and from the claims. The detailed description first addresses Definitions and Clarification of Terms followed by the Chrysene Compound, the Electronic Device, and finally Examples.

1. Definitions and Clarification of Terms

Before addressing details of embodiments described below, some terms are defined or clarified.

As used herein, the term "aliphatic ring" is intended to mean a cyclic group that does not have delocalized pi electrons. In some embodiments, the aliphatic ring has no unsaturation. In some embodiments, the ring has one double or triple bond.

The term "alkyl" is intended to mean a group derived from an aliphatic hydrocarbon having one point of attachment, and includes a linear, a branched, or a cyclic group. The term is intended to include heteroalkyls. The term "hydrocarbon alkyl" refers to an alkyl group having no heteroatoms. In some embodiments, an alkyl group has from 1-20 carbon atoms.

5

e and j are the same or different at each occurrence and are an integer from 0-5.

In some embodiments, the compound is capable of blue or green emission.

In some embodiments, R¹ through R⁴ are hydrocarbon alkyl groups. In some embodiments R¹ is a branched hydrocarbon alkyl group and R² through R⁴ are H. In some embodiments, the branched hydrocarbon alkyl group has from 3-8 carbon atoms. In some embodiments, the branched hydrocarbon alkyl group is a secondary alkyl selected from the group consisting of isopropyl and 2-butyl. In some embodiments, the branched hydrocarbon alkyl group is a tertiary alkyl selected from the group consisting of t-butyl and 2-(2-methyl)-butyl.

In some embodiments, R¹ and R² taken together and R³ and R⁴ taken together form a 5- or 6-membered aliphatic ring. In some embodiments, the aliphatic ring is selected from the group consisting of cyclohexyl and cyclopentyl. In some embodiments, the aliphatic ring has one or more alkyl substituents. In some embodiments, R¹ and R² taken together form a 5- or 6-membered aliphatic ring and R³ and R⁴ are H.

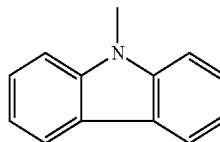
In some embodiments, each of R¹ through R⁴ is H.

In some embodiments, R⁵ and R⁶ are straight chain or branched alkyl groups. In some embodiments, R⁵ and R⁶ are straight chain or branched hydrocarbon alkyl groups. In some embodiments, R⁵ and R⁶ are hydrocarbon alkyl groups having 1-6 carbon atoms. In some embodiments, c=d=1, and R⁵ and R⁶ are at the 4-position. In some embodiments, c=d=2, and R⁵ and R⁶ are at the 2- and 4-positions.

In some embodiments, R⁵ and R⁶ are aromatic groups selected from the group consisting of o-phenyl, m-phenyl,

6

p-phenyl, m-N-carbazolyl, and p-N-carbazolyl groups. By m-N-carbazolyl is meant the group



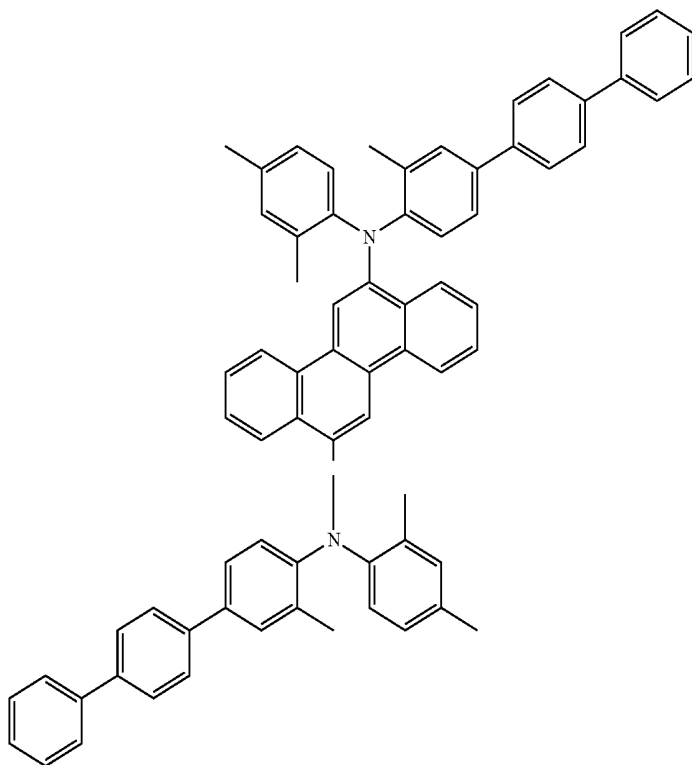
attached to the 3 position of the phenyl ring of the target molecule. By p-N-carbazolyl is meant the above group attached to the 4 position of the phenyl ring of the target molecule. The aromatic groups may further be substituted with D, alkyl, silyl, or phenyl groups.

In some embodiments, R⁷ is a hydrocarbon alkyl group having 1-10 carbon atoms. In some embodiments, at least one of e through j is greater than 0. In some embodiments, e=f=g=h=i=j=0.

In some embodiments, a and b are 1-3. In some embodiments, a=b. In some embodiments, a=b=1-3.

In some embodiments, the chrysene compound is selected from compounds E1 through E28:

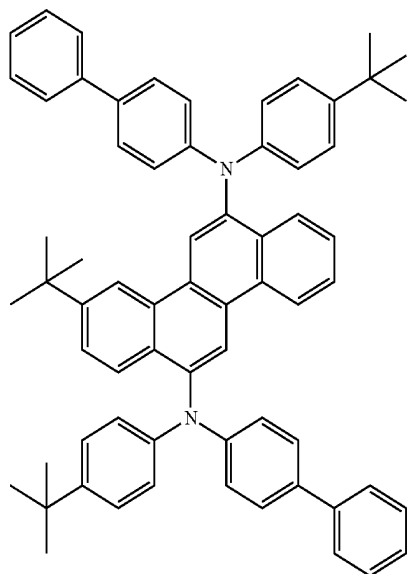
E1:



C₇₂H₅₈N₂
 Exact Mass: 950.46
 Mol. Wt.: 951.24
 C, 90.91; H, 6.15; N, 2.94

7

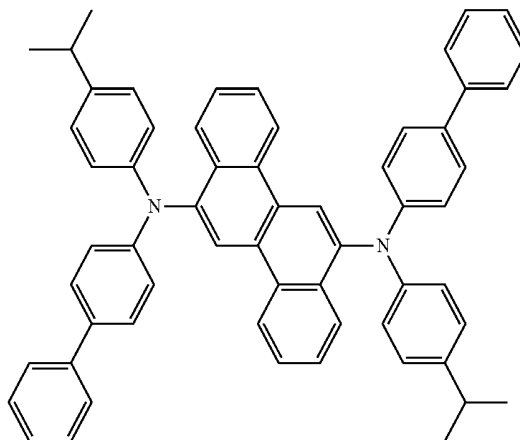
E2:



-continued

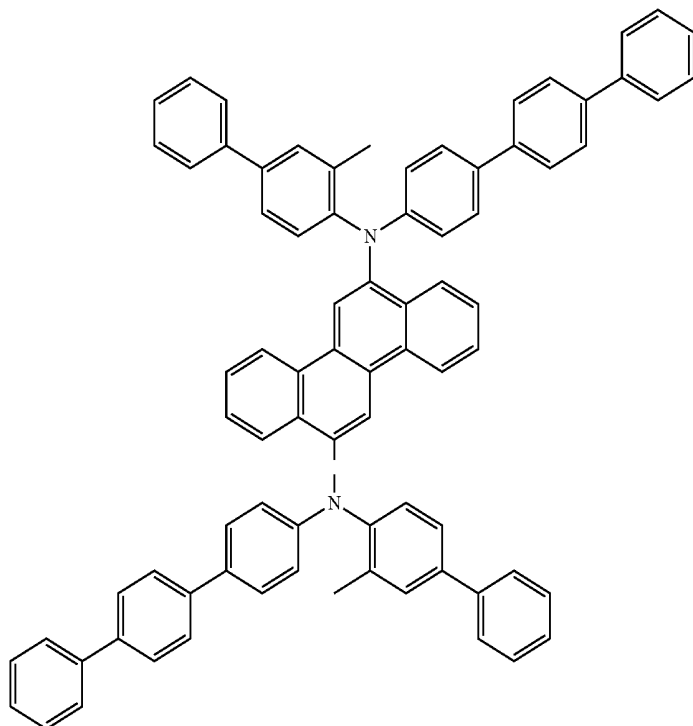
8

E3:



$C_{60}H_{50}N_2$
 Exact Mass: 798.40
 Mol. Wt.: 799.05
 C, 90.91; H, 6.31; N, 3.51

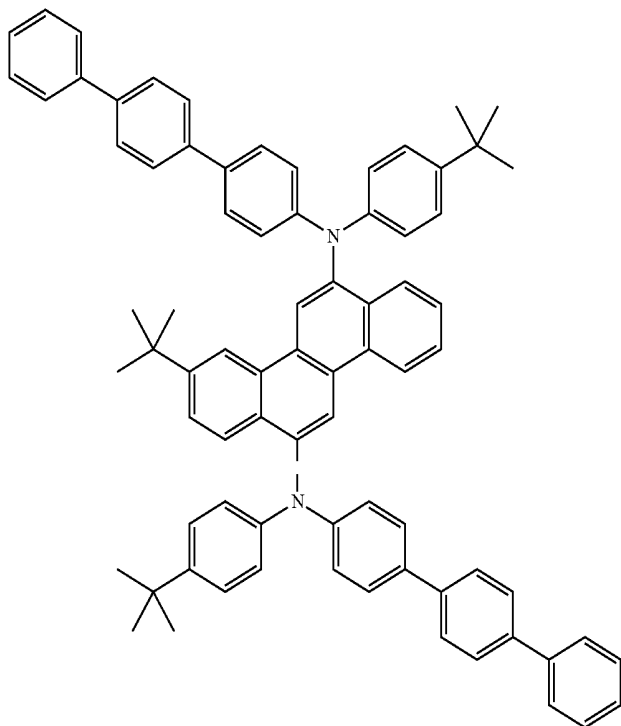
E4:



$C_{80}H_{58}N_2$
 Exact Mass: 1046.46
 Mol. Wt.: 1047.33
 C, 91.74; H, 5.58; N, 2.67

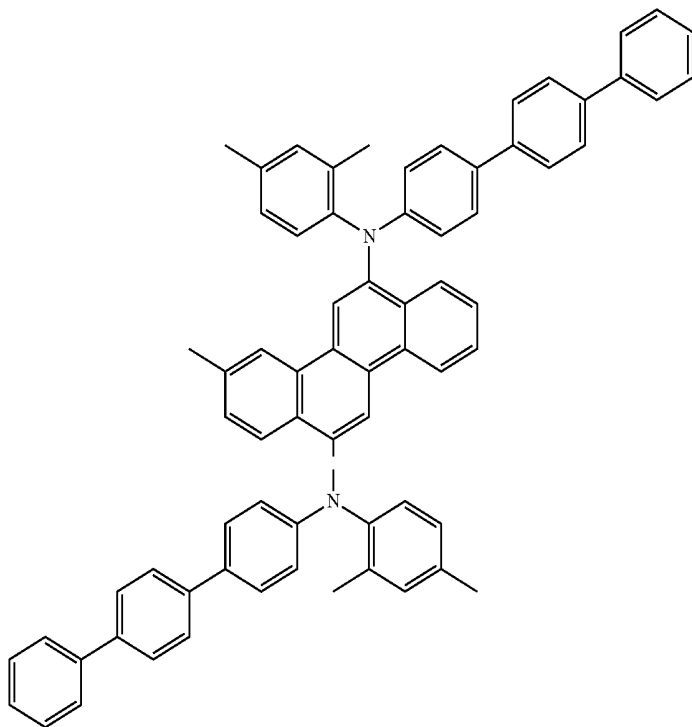
-continued

E5:



$C_{78}H_{70}N_2$
Exact Mass: 1034.55
Mol. Wt.: 1035.40
C, 90.48; H, 6.81; N, 2.71

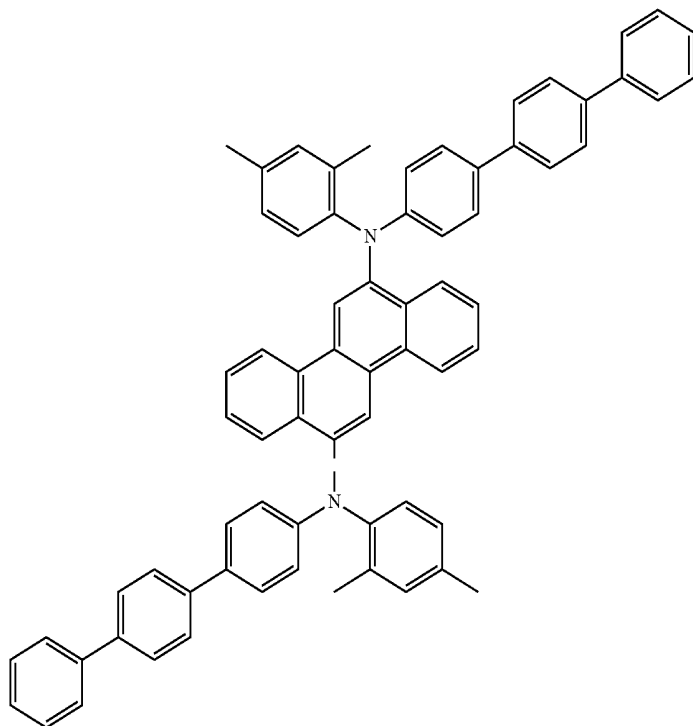
E6:



$C_{71}H_{56}N_2$
Exact Mass: 936.44
Mol. Wt.: 937.22
C, 90.99; H, 6.02; N, 2.99

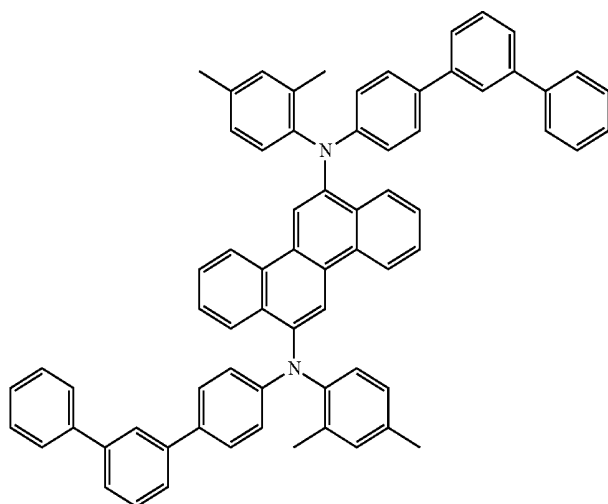
-continued

E7:



$C_{70}H_{54}N_2$
Exact Mass: 922.43
Mol. Wt.: 923.19
C, 91.07; H, 5.90; N, 3.03

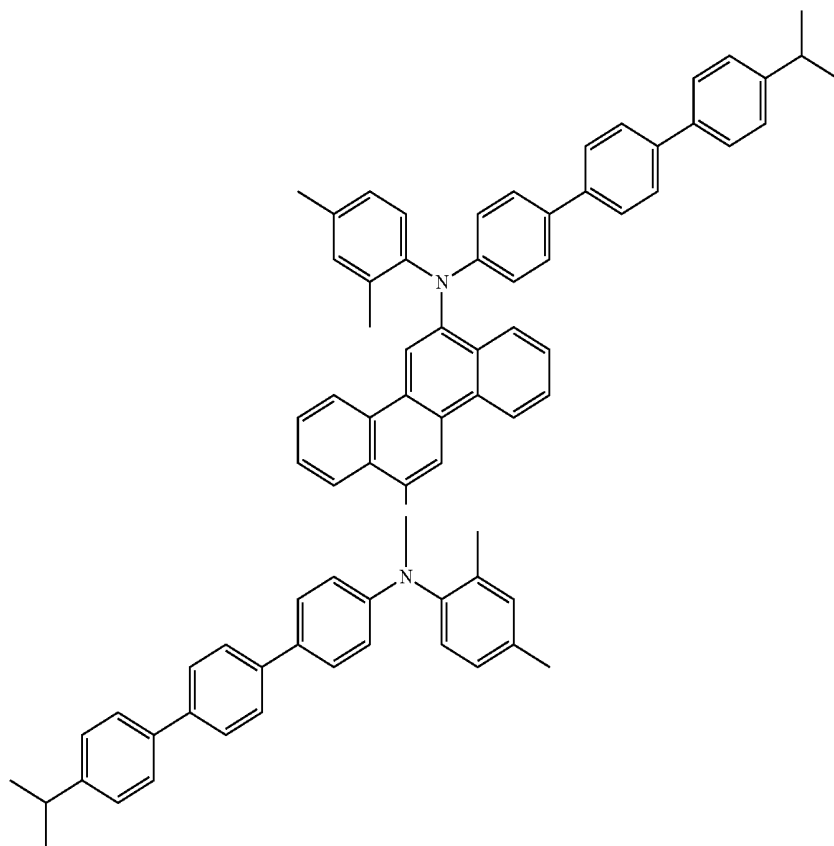
E8:



$C_{70}H_{54}N_2$
Exact Mass: 922.43
Mol. Wt.: 923.19
C, 91.07; H, 5.90; N, 3.03

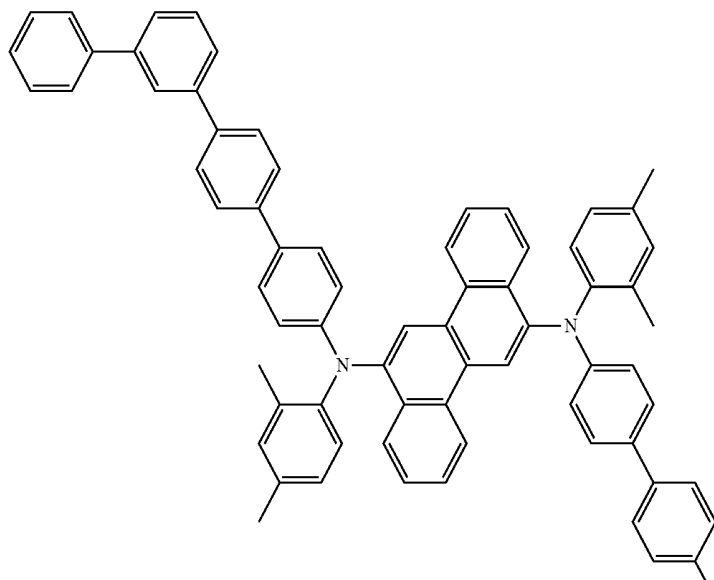
-continued

E9:



$C_{26}H_{36}N_2$
Exact Mass: 1006.52
Mol. Wt.: 1007.35
C, 90.62; H, 6.60; N, 2.78

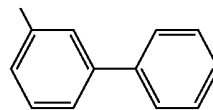
E10:



15

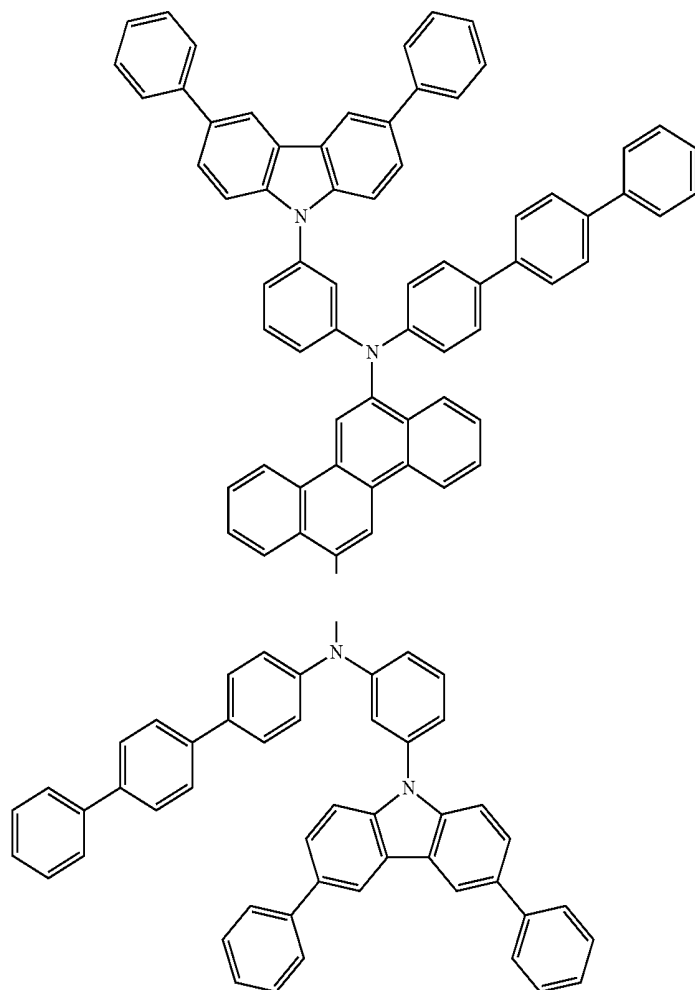
-continued

16



$C_{12}H_{10}N_2$
Exact Mass: 174.08
Mol. Wt.: 174.19
C, 81.58; H, 5.74; N, 8.68

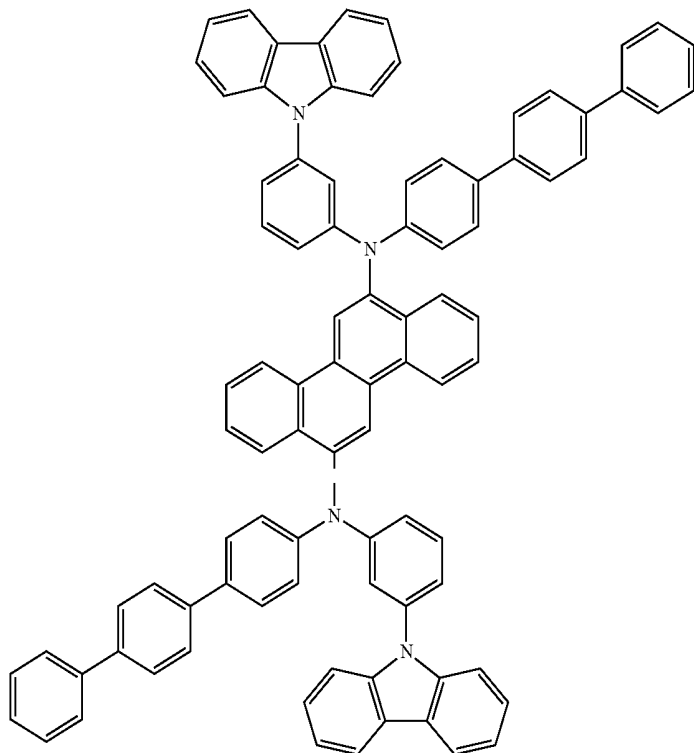
E11:



$C_{114}H_{76}N_4$
Exact Mass: 1500.61
Mol. Wt.: 1501.85
C, 91.17; H, 5.10; N, 3.73

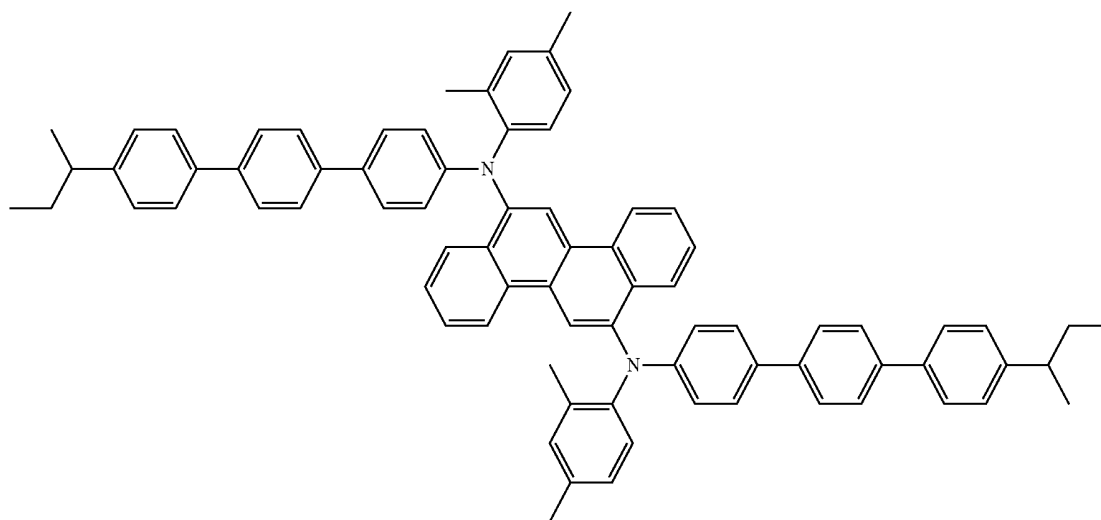
-continued

E12:



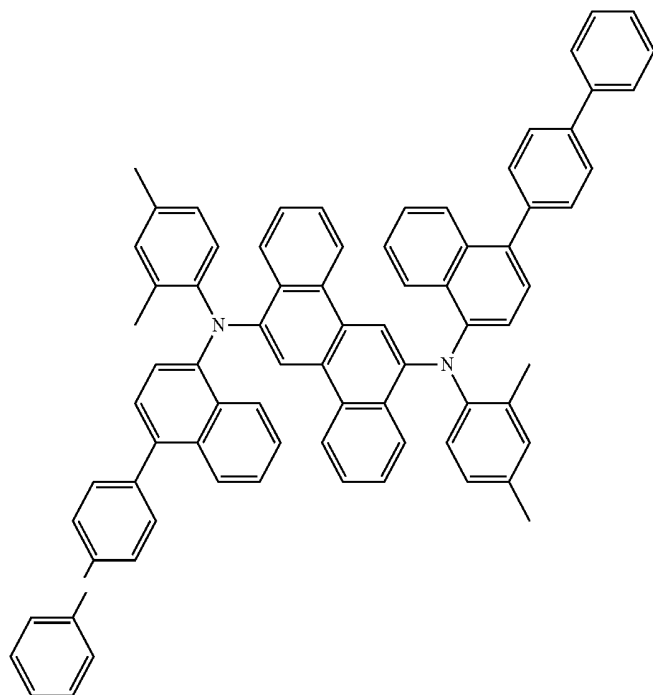
$C_{90}H_{60}N_4$
Exact Mass: 1196.48
Mol. Wt.: 1197.47
C, 90.27; H, 5.05; N, 4.68

E13:



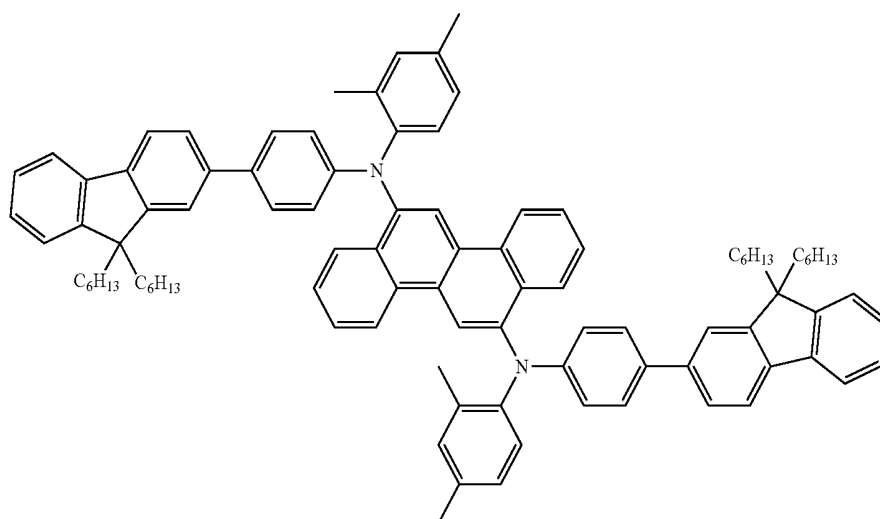
-continued

E14:



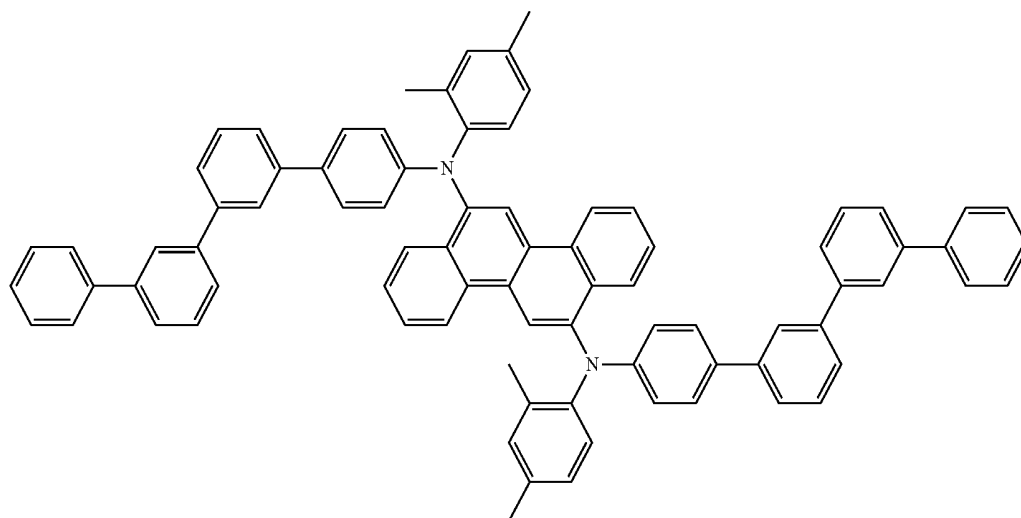
$C_{78}H_{58}N_2$
Exact Mass: 1022.46
Mol. Wt.: 1023.31
C, 91.55; H, 5.71; N, 2.74

E15:

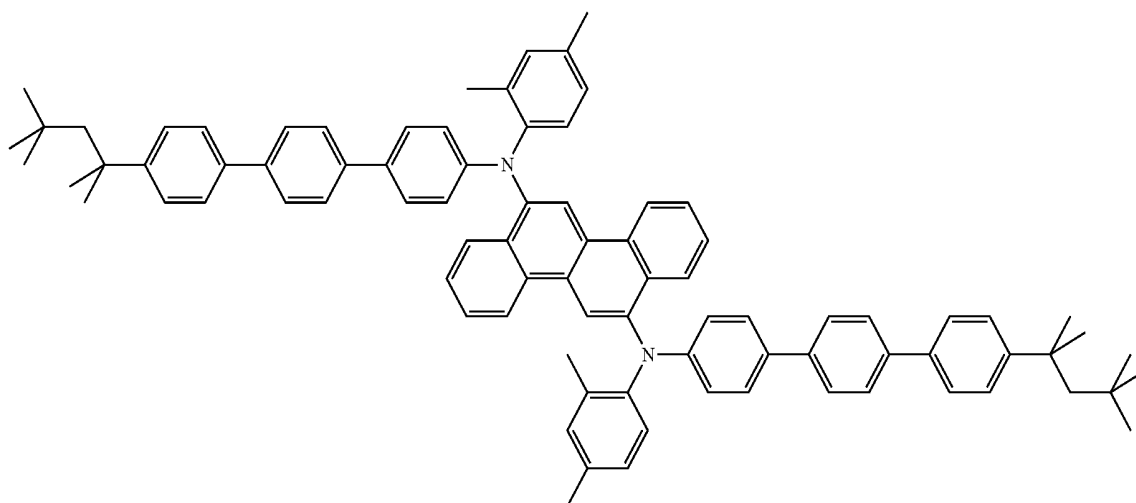


-continued

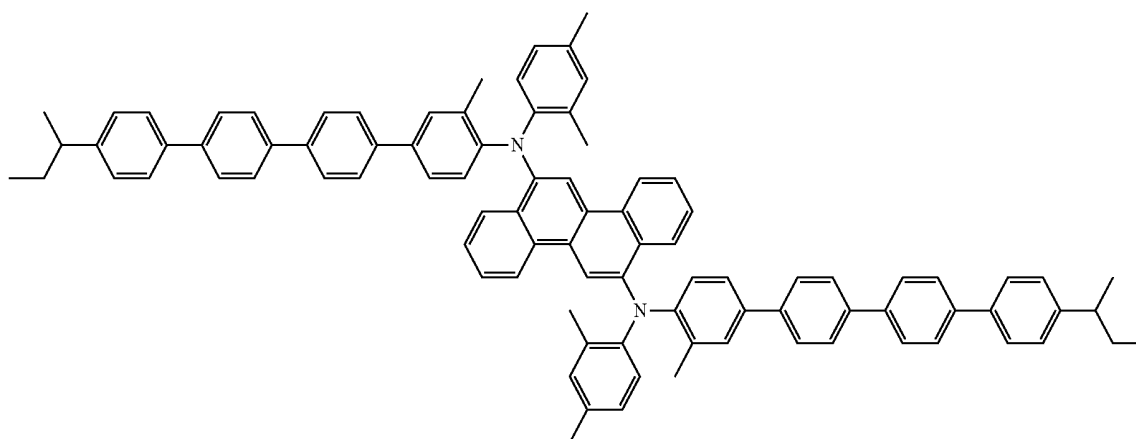
E18:



E19:

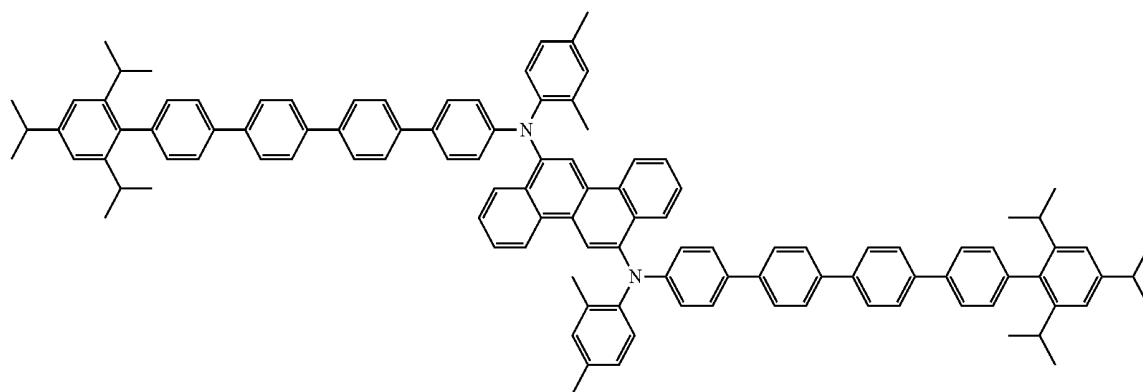


E20:

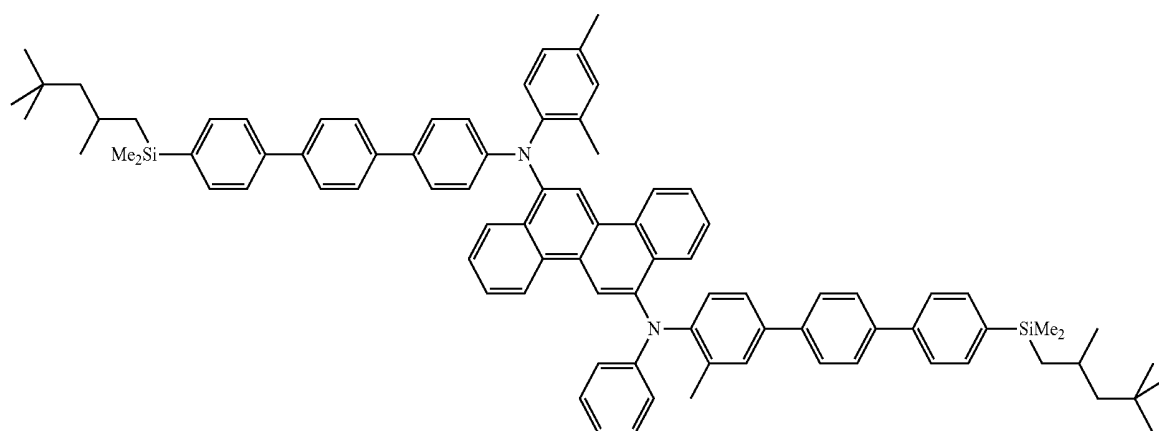


-continued

E27:



E28:



The new chrysenes can be prepared by known coupling and substitution reactions. Exemplary preparations are given in the Examples.

The chrysenes compounds described herein can be formed into films using liquid deposition techniques. Thin films of these materials dispersed in a host matrix exhibit good to excellent photoluminescent properties and blue or green emission.

The chrysenes compounds described herein have diarylamine substituents with at least one oligo-phenyl group. The oligo-phenyl group can be biphenyl, terphenyl, quaterphenyl, and above. Surprisingly and unexpectedly, these compounds have greatly improved properties when compared to chrysenes compounds having only single phenyl groups on the diarylamine substituents. Electronic devices including an active layer with the chrysenes compounds described herein, have greatly improved lifetimes. It has been discovered that the lifetime increases with the number of repeat units on the nitrogen substituent. In addition, the lifetime increases are achieved in combination with high quantum efficiency and good color.

3. Electronic Device

Organic electronic devices that may benefit from having one or more layers comprising the blue luminescent materials described herein include, but are not limited to: (1) devices that convert electrical energy into radiation (e.g., a light-emitting diode, light emitting diode display, or diode laser); (2) devices that detect signals through electronics processes (e.g., photodetectors, photoconductive cells, photoresistors, photoswitches, phototransistors, phototubes, IR detectors); (3) devices that convert radiation into electrical energy, (e.g.,

a photovoltaic device or solar cell); and (4) devices that include one or more electronic components that include one or more organic semi-conductor layers (e.g., a transistor or diode).

One illustration of an organic electronic device structure is shown in FIG. 1. The device **100** has a first electrical contact layer, an anode layer **110** and a second electrical contact layer, a cathode layer **160**, and a photoactive layer **140** between them. Adjacent to the anode is a buffer layer **120**. Adjacent to the buffer layer is a hole transport layer **130**, comprising hole transport material. Adjacent to the cathode may be an electron transport layer **150**, comprising an electron transport material. As an option, devices may use one or more additional hole injection or hole transport layers (not shown) next to the anode **110** and/or one or more additional electron injection or electron transport layers (not shown) next to the cathode **160**.

Layers **120** through **150** are individually and collectively referred to as the active layers.

In one embodiment, the different layers have the following range of thicknesses: anode **110**, 500-5000 Å, in one embodiment 1000-2000 Å; buffer layer **120**, 50-2000 Å, in one embodiment 200-1000 Å; hole transport layer **130**, 50-2000 Å, in one embodiment 200-1000 Å; photoactive layer **140**, 10-2000 Å, in one embodiment 100-1000 Å; layer **150**, 50-2000 Å, in one embodiment 100-1000 Å; cathode **160**, 200-10000 Å, in one embodiment 300-5000 Å. The location of the electron-hole recombination zone in the device, and thus the emission spectrum of the device, can be affected by the relative thickness of each layer. The desired ratio of layer thicknesses will depend on the exact nature of the materials used.

31

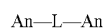
Depending upon the application of the device **100**, the photoactive layer **140** can be a light-emitting layer that is activated by an applied voltage (such as in a light-emitting diode or light-emitting electrochemical cell), or a layer of material that responds to radiant energy and generates a signal with or without an applied bias voltage (such as in a photo-detector). Examples of photodetectors include photoconductive cells, photoresistors, photoswitches, phototransistors, and phototubes, and photovoltaic cells, as these terms are described in Markus, John, *Electronics and Nuclear Electronics Dictionary*, 470 and 476 (McGraw-Hill, Inc. 1966).

a. Photoactive Layer

The chrysene compounds of Formula I are useful as photoactive materials in layer **140**. The compounds can be used alone, or in combination with a host material.

In some embodiments, the host is a bis-condensed cyclic aromatic compound.

In some embodiments, the host is an anthracene derivative compound. In some embodiments the compound has the formula:



where:

An is an anthracene moiety;

L is a divalent connecting group.

In some embodiments of this formula, L is a single bond, —O—, —S—, —N(R)—, or an aromatic group. In some embodiments, An is a mono- or diphenylanthryl moiety.

In some embodiments, the host has the formula:



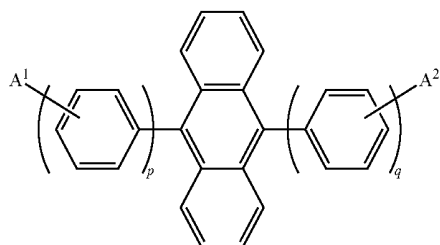
where:

An is an anthracene or deuterated anthracene moiety;

A is the same or different at each occurrence and is an aromatic group.

In some embodiments, the A groups are attached at the 9- and 10-positions of the anthracene moiety. In some embodiments, A is selected from the group consisting naphthyl, naphthylphenylene, and naphthylphenylene. In some embodiments the compound is symmetrical and in some embodiments the compound is non-symmetrical.

In some embodiments, the host has the formula:



where:

A¹ and A² are the same or different at each occurrence and are selected from the group consisting of H, D, an aromatic group, and an alkenyl group, or A may represent one or more fused aromatic rings;

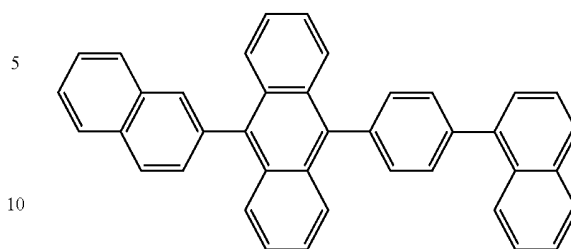
p and q are the same or different and are an integer from 0-3.

In some embodiments, the anthracene derivative is non-symmetrical. In some embodiments, p=2 and q=1. In some embodiments, at least one of A¹ and A² is a naphthyl group.

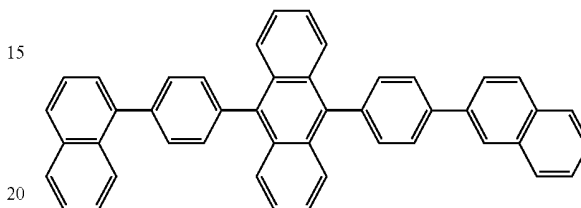
In some embodiments, the host is selected from the group consisting of

32

H1



H2



and combinations thereof.

The chrysene compounds of Formula I, in addition to being useful as emissive dopants in the photoactive layer, can also act as charge carrying hosts for other emissive dopants in the photoactive layer **140**.

b. Other Device Layers

The other layers in the device can be made of any materials that are known to be useful in such layers.

The anode **110**, is an electrode that is particularly efficient for injecting positive charge carriers. It can be made of, for example, materials containing a metal, mixed metal, alloy, metal oxide or mixed-metal oxide, or it can be a conducting polymer, or mixtures thereof. Suitable metals include the Group 11 metals, the metals in Groups 4-6, and the Group 8-10 transition metals. If the anode is to be light-transmitting, mixed-metal oxides of Groups 12, 13 and 14 metals, such as indium-tin-oxide, are generally used. The anode **110** can also comprise an organic material such as polyaniline as described in "Flexible light-emitting diodes made from soluble conducting polymer," *Nature* vol. 357, pp 477-479 (11 Jun. 1992). At least one of the anode and cathode is desirably at least partially transparent to allow the generated light to be observed.

The buffer layer **120** comprises buffer material and may have one or more functions in an organic electronic device, including but not limited to, planarization of the underlying layer, charge transport and/or charge injection properties, scavenging of impurities such as oxygen or metal ions, and other aspects to facilitate or to improve the performance of the organic electronic device. Buffer materials may be polymers, oligomers, or small molecules. They may be vapour deposited or deposited from liquids which may be in the form of solutions, dispersions, suspensions, emulsions, colloidal mixtures, or other compositions.

The buffer layer can be formed with polymeric materials, such as polyaniline (PANI) or polyethylenedioxythiophene (PEDOT), which are often doped with protonic acids. The protonic acids can be, for example, poly(styrenesulfonic acid), poly(2-acrylamido-2-methyl-1-propanesulfonic acid), and the like.

The buffer layer can comprise charge transfer compounds, and the like, such as copper phthalocyanine and the tetrathiafulvalene-tetracyanoquinodimethane system (TTF-TCNQ).

In some embodiments, the buffer layer comprises at least one electrically conductive polymer and at least one fluori-

nated acid polymer. Such materials have been described in, for example, published U.S. patent applications 2004-0102577, 2004-0127637, and 2005/205860

Examples of hole transport materials for layer **130** have been summarized for example, in Kirk-Othmer Encyclopedia of Chemical Technology, Fourth Edition, Vol. 18, p. 837-860, 1996, by Y. Wang. Both hole transporting molecules and polymers can be used. Commonly used hole transporting molecules are: N,N'-diphenyl-N,N'-bis(3-methylphenyl)-[1,1'-biphenyl]-4,4'-diamine (TPD), 1,1-bis[(di-4-tolylamino)phenyl]cyclohexane (TAPC), N,N'-bis(4-methylphenyl)-N,N'-bis(4-ethylphenyl)-[1,1'-(3,3'-dimethyl)biphenyl]-4,4'-diamine (ETPD), tetrakis-(3-methylphenyl)-N,N,N',N'-2,5-phenylenediamine (PDA), a-phenyl-4-N,N-diphenylaminostyrene (TPS), p-(diethylamino)benzaldehyde diphenylhydrazone (DEH), triphenylamine (TPA), bis[4-(N,N-diethylamino)-2-methylphenyl](4-methylphenyl)methane (MPMP), 1-phenyl-3-[p-(diethylamino)styryl]-5[p-(diethylamino)phenyl]pyrazoline (PPR or DEASP), 1,2-trans-bis(9H-carbazol-9-yl)cyclobutane (DCZB), N,N,N',N'-tetrakis(4-methylphenyl)-(1,1'-biphenyl)-4,4'-diamine (TTB), N,N'-bis(naphthalen-1-yl)-N,N'-bis(phenyl)benzidine (α -NPB), and porphyrinic compounds, such as copper phthalocyanine. Commonly used hole transporting polymers are polyvinylcarbazole, (phenylmethyl)polysilane, and polyaniline. It is also possible to obtain hole transporting polymers by doping hole transporting molecules such as those mentioned above into polymers such as polystyrene and polycarbonate. In some cases, triarylamine polymers are used, especially triarylamine-fluorene copolymers. In some cases, the polymers and copolymers are crosslinkable.

Examples of additional electron transport materials which can be used in layer **150** include metal chelated oxinoid compounds, such as tris(8-hydroxyquinolato)aluminum (Alq_3); bis(2-methyl-8-quinolinolato)(para-phenyl-phenolato)aluminum(III) (BAIQ); and azole compounds such as 2-(4-biphenyl)-5-(4-t-butylphenyl)-1,3,4-oxadiazole (PBD) and 3-(4-biphenyl)-4-phenyl-5-(4-t-butylphenyl)-1,2,4-triazole (TAZ), and 1,3,5-tri(phenyl-2-benzimidazole)benzene (TPBI); quinoxaline derivatives such as 2,3-bis(4-fluorophenyl)quinoxaline; phenanthroline derivatives such as 9,10-diphenylphenanthroline (DPA) and 2,9-dimethyl-4,7-diphenyl-1,10-phenanthroline (DDPA); and mixtures thereof. Layer **150** can function both to facilitate electron transport, and also serve as a buffer layer or confinement layer to prevent quenching of the exciton at layer interfaces. Preferably, this layer promotes electron mobility and reduces exciton quenching.

The cathode **160**, is an electrode that is particularly efficient for injecting electrons or negative charge carriers. The cathode can be any metal or nonmetal having a lower work function than the anode. Materials for the cathode can be selected from alkali metals of Group 1 (e.g., Li, Cs), the Group 2 (alkaline earth) metals, the Group 12 metals, including the rare earth elements and lanthanides, and the actinides. Materials such as aluminum, indium, calcium, barium, samarium and magnesium, as well as combinations, can be used. Li-containing organometallic compounds, LiF, and Li_2O can also be deposited between the organic layer and the cathode layer to lower the operating voltage.

It is known to have other layers in organic electronic devices. For example, there can be a layer (not shown) between the anode **110** and buffer layer **120** to control the amount of positive charge injected and/or to provide band-gap matching of the layers, or to function as a protective layer. Layers that are known in the art can be used, such as copper

phthalocyanine, silicon oxy-nitride, fluorocarbons, silanes, or an ultra-thin layer of a metal, such as Pt. Alternatively, some or all of anode layer **110**, active layers **120**, **130**, **140**, and **150**, or cathode layer **160**, can be surface-treated to increase charge carrier transport efficiency. The choice of materials for each of the component layers is preferably determined by balancing the positive and negative charges in the emitter layer to provide a device with high electroluminescence efficiency.

It is understood that each functional layer can be made up of more than one layer.

The device can be prepared by a variety of techniques, including sequential vapor deposition of the individual layers on a suitable substrate. Substrates such as glass, plastics, and metals can be used. Conventional vapor deposition techniques can be used, such as thermal evaporation, chemical vapor deposition, and the like. Alternatively, the organic layers can be applied from solutions or dispersions in suitable solvents, using conventional coating or printing techniques, including but not limited to spin-coating, dip-coating, roll-to-roll techniques, ink-jet printing, screen-printing, gravure printing and the like.

The present invention also relates to an electronic device comprising at least one active layer positioned between two electrical contact layers, wherein the at least one active layer of the device includes the chrysene compound of Formula 1. Devices frequently have additional hole transport and electron transport layers.

To achieve a high efficiency LED, the HOMO (highest occupied molecular orbital) of the hole transport material desirably aligns with the work function of the anode, and the LUMO (lowest un-occupied molecular orbital) of the electron transport material desirably aligns with the work function of the cathode. Chemical compatibility and sublimation temperature of the materials are also important considerations in selecting the electron and hole transport materials.

It is understood that the efficiency of devices made with the chrysene compounds described herein, can be further improved by optimizing the other layers in the device. For example, more efficient cathodes such as Ca, Ba or LiF can be used. Shaped substrates and novel hole transport materials that result in a reduction in operating voltage or increase quantum efficiency are also applicable. Additional layers can also be added to tailor the energy levels of the various layers and facilitate electroluminescence.

The chrysene compounds of the invention often are fluorescent and photoluminescent and can be useful in applications other than OLEDs, such as oxygen sensitive indicators and as fluorescence indicators in bioassays.

EXAMPLES

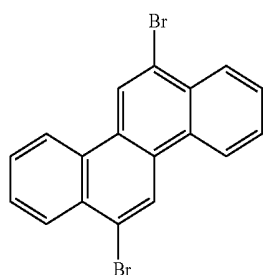
The following examples illustrate certain features and advantages of the present invention. They are intended to be illustrative of the invention, but not limiting. All percentages are by weight, unless otherwise indicated.

Synthesis Example 1

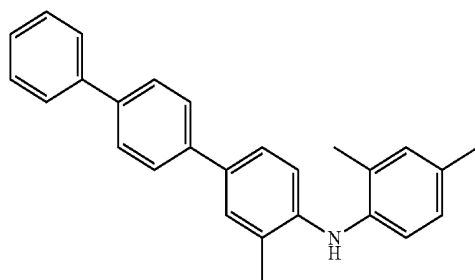
This example illustrates the preparation of Compound E1. Take 0.39 g of the dibromochrysene (1 mmol) in glove box and add 0.75 g (2.1 mmol) sec-amine and 0.22 g t-BuONa (2.2 mmol) with 10 mL toluene. Add 0.15 g Pd_2DBA_3 (tris(dibenzylideneacetone) dipalladium(0), 0.15 mmol), 0.06 g $P(t-Bu)_3$ (0.30 mmol). Mix and heat in glove box in mantle at 110° C. under nitrogen for 1 hr. Solution immediately is dark purple but on reaching ~80° C. it is dark purple brown with

35

noticeable blue luminescence. Warm at $-RT$ overnight. Cool and work up by column chromatography eluting with toluene. Product is pale yellow and quite soluble. The blue luminescent material elutes from the column as a pale yellow solution. Evaporate to low volume and add methanol to ppt yellow solid with blue PL in ~ 0.5 g yield. TLC shows single blue spot running at the solvent front in toluene. Material is very soluble in toluene

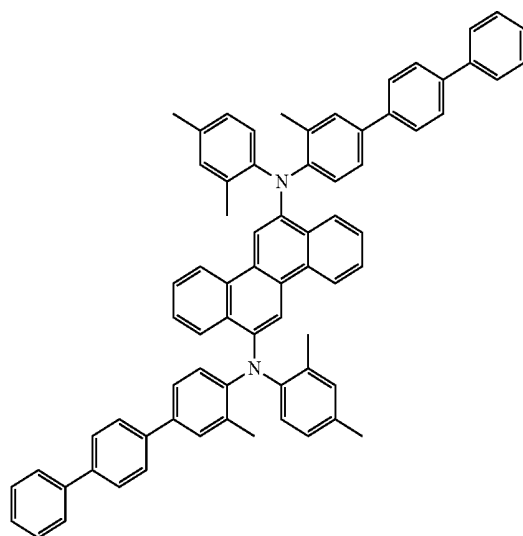


$C_{18}H_{10}Br_2$
Exact Mass: 383.91
Mol. Wt.: 386.08
C, 56.00; H, 2.61; Br, 41.39



$C_{27}H_{25}N$
Exact Mass: 363.20
Mol. Wt.: 363.49
C, 89.21; H, 6.93; N, 3.85

Product:

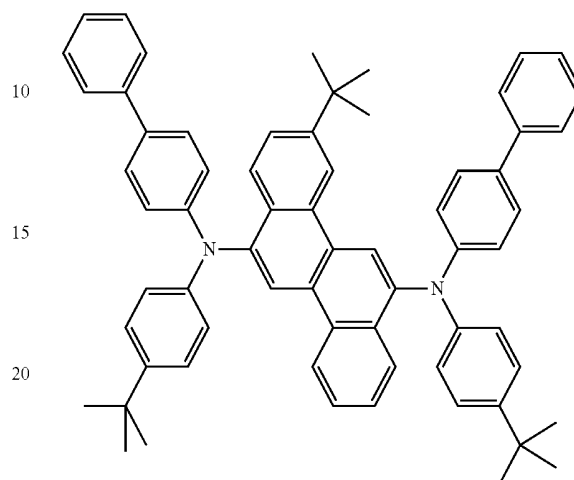


$C_{72}H_{58}N_2$
Exact Mass: 950.46
Mol. Wt.: 951.24
C, 90.91; H, 6.15; N, 2.94

36

Synthesis Example 2

This example illustrates the preparation of Compound E2, N^6,N^{12} -di(biphenyl-4-yl)-3-tert-butyl- N^6,N^{12} -bis(4-tert-butylphenyl)chrysene-6,12-diamine.

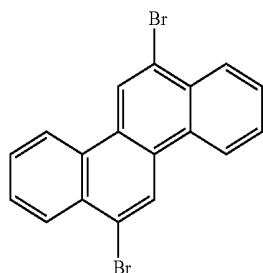


In a drybox, 3-tert-butyl-6,12-dibromochrysene (1.8 g, 4.07 mmol) and N -(4-tert-butylphenyl)biphenyl-4-amine (2.58 g, 8.55 mmol) were combined in a thick-walled glass tube and dissolved in 20 ml of dry toluene. Tris(tert-butyl) phosphine (0.0148 g, 0.073 mmol) and tris(dibenzylideneacetone) dipalladium(0) (0.0335 g, 0.0366 mmol) were dissolved in 10 ml of dry toluene and stirred for 10 minutes. The catalyst solution was added to the reaction mixture, stirred for 10 minutes and followed by sodium tert-butoxide (0.782 g, 8.14 mmol) and 20 ml of dry toluene. After another 10 minutes, the reaction flask was brought out of the drybox, attached to a nitrogen line and stirred at $80^\circ C$ overnight. Next day, reaction mixture was cooled to room temperature and filtered through a 4 inch plug of silica gel and one inch of celite, washing with one liter of chloroform and 300 ml of dichloromethane. Removal of volatiles under reduced pressure gave a yellow solid. The crude product was purified further by silica gel column chromatography using a gradient of dichloromethane in hexanes (10% to 15%). Removal of volatiles yielded 3.25 g (90.5%) of product as a yellow solid. 1H NMR (CD_2Cl_2): δ 1.22 (s, 9H), 1.23 (s, 9H), 1.31 (s, 9H), 7.04-7.56 (m, 29H), 8.00 (d, 1H, $J=8.8$ Hz), 8.07 (dd, 1H, $J=1.1, 8.3$ Hz), 8.44 (d, 1H, $J=1.8$ Hz), 8.51 (s, 1H), 8.53 (s, 1H), 8.54 (d, 1H, $J=8.3$ Hz).

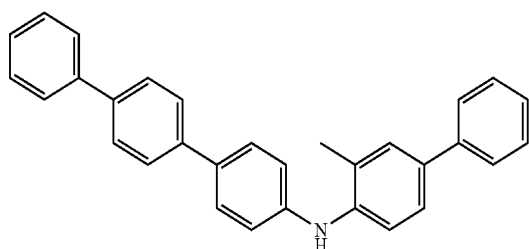
Synthesis Example 3

This example illustrates the preparation of Compound E4. Take 0.39 g of the dibromochrysene (1 mmol) in glove box and add 0.88 g (2.1 mmol) sec-amine (100555-201) and 0.22 g t -BuONa (2.2 mmol) with 10 mL toluene. Add 0.15 g Pd_2DBA_3 (0.15 mmol), 0.06 g $P(t-Bu)_3$ (0.30 mmol) dissolved in xylenes. Mix and heat in glove box in mantle at $110^\circ C$ under nitrogen for 1 hr. Solution immediately is dark purple but on reaching $\sim 80^\circ C$ it is dark yellow brown with noticeable blue luminescence. Warm at $\sim 80^\circ C$ overnight. Cool and work up by column chromatography eluting with toluene. Product is pale yellow and poorly soluble. The blue luminescent material elutes from the column as a pale yellow solution. Evaporate to low volume and add methanol to precipitate yellow solid with blue PL in ~ 0.3 g yield. Material is modestly soluble in toluene.

37

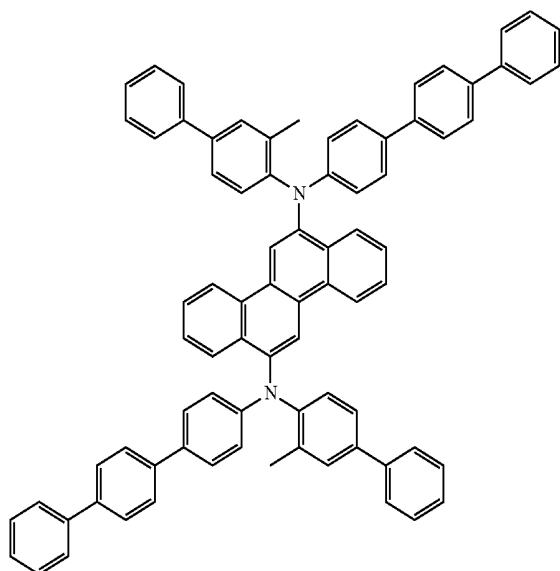


$C_{18}H_{10}Br_2$
Exact Mass: 383.91
Mol. Wt.: 386.08
C, 56.00; H, 2.61; Br, 41.39



$C_{31}H_{25}N$
Exact Mass: 411.20
Mol. Wt.: 411.54
C, 90.47; H, 6.12; N, 3.40

Product:



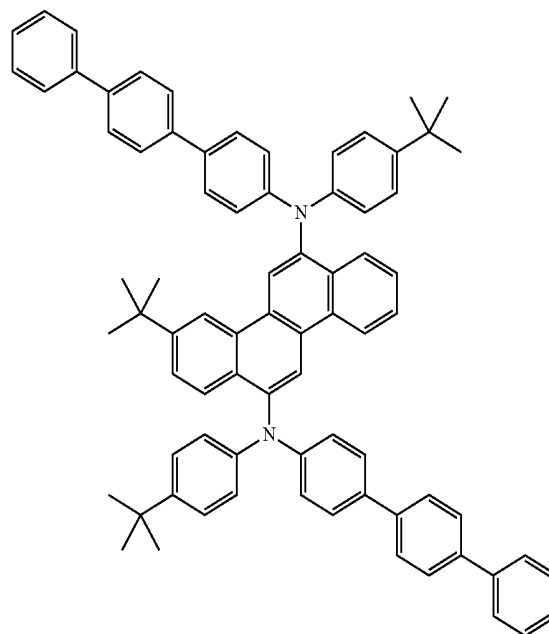
$C_{80}H_{68}N_2$
Exact Mass: 1046.46
Mol. Wt.: 1047.33
C, 91.74; H, 5.58; N, 2.67

Synthesis Example 4

This example illustrates the preparation of Compound E5. In a drybox, $Pd_2(dba)_3$ (10.4 mg, 11.4 μ mol) and $P(tert-Bu)_3$

38

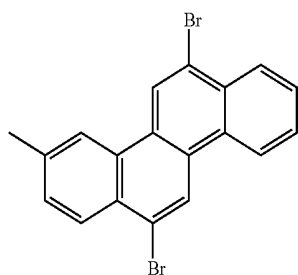
(4.6 mg, 22.8 μ mol) were dissolved in 3 ml of dry toluene and set aside for five minutes. 6,12-Dibromochrysene (504 mg, 1.14 mmol) and N -(4-*tert*-butylphenyl)-4,4'-terphenylamine (860 mg, 2.28 mmol) were combined in the reaction flask and dissolved in dry toluene (25 ml). Pre-formed catalyst solution was added next, reaction mixture was stirred for three minutes, followed by the addition of sodium *tert*-butoxide (224 mg, 2.33 mmol). Reaction was stirred at 100° C. for 16 hours. Reaction mixture was filtered through a plug of silica and Celite. The silica/Celite plug was washed with 300 ml of CH_2Cl_2 . Filtrates were combined and evaporated to dryness using rotary evaporator. The crude product was purified by column chromatography twice. First, on alumina column with 20% CH_2Cl_2 in hexanes to get rid of unreacted diarylamine and, second, on silica gel (silica gel 60, 230-400 mesh from EMD, 15% CH_2Cl_2 in hexanes, monitored by TLC, same solvent system, R_f (product)=0.09, R_f (impurity)=0.18). Yield 450 mg (38%) of yellow solid. Analysis by 1H NMR indicated that the product was Compound E5.



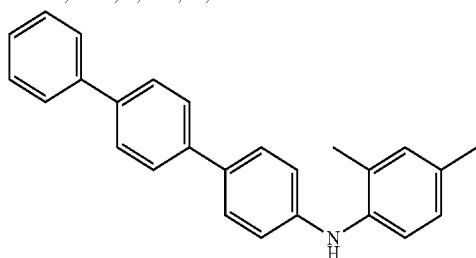
Synthesis Example 5

This example illustrates the preparation of Compound E6. Take 0.39 g of the 6,12-dibromo-3-methylchrysene (1 mmol) in glove box and add 0.75 g (2.1 mmol) *sec*-amine and 0.22 g *t*-BuONa (2.2 mmol) with 10 mL toluene. Add 0.15 g Pd_2DBA_3 (0.15 mmol), 0.06 g $P(tert-Bu)_3$ (0.30 mmol) dissolved in toluene. Mix and heat in glove box in mantle at 80° C. under nitrogen for 1 hr. Solution immediately is dark purple but on reaching ~80° C. it is dark yellow brown with noticeable blue luminescence. Cool and work up by column chromatography eluting with toluene. Product is pale yellow and nicely soluble. The blue luminescent material elutes from the column as a pale yellow solution. Evaporate to low volume and add methanol to ppt yellow solid with blue PL in ~0.5 g yield. TLC shows single blue spot running at the solvent front in toluene. Material is soluble in toluene.

39

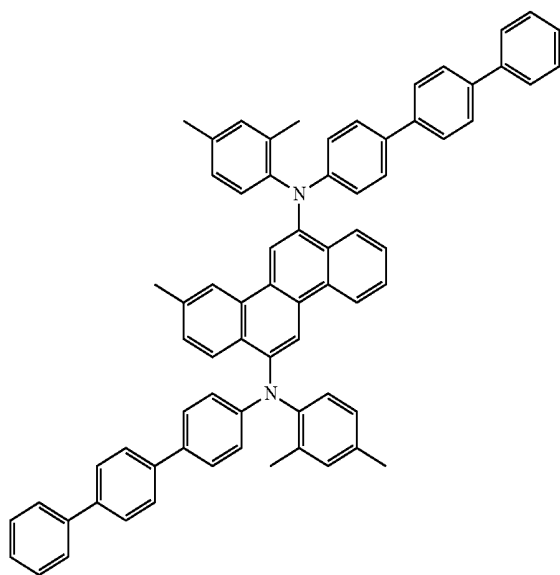


$C_{19}H_{12}Br_2$
Exact Mass: 397.93
Mol. Wt.: 400.11
C, 57.04; H, 3.02; Br, 39.94



$C_{26}H_{23}N$
Exact Mass: 349.18
Mol. Wt.: 349.47
C, 89.36; H, 6.63; N, 4.01

Product:



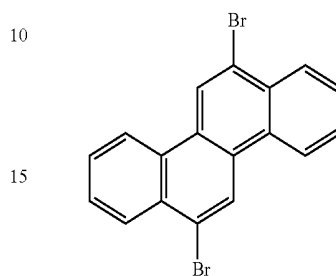
$C_{71}H_{56}N_2$
Exact Mass: 936.44
Mol. Wt.: 937.22
C, 90.99; H, 6.02; N, 2.99

Synthesis Example 6

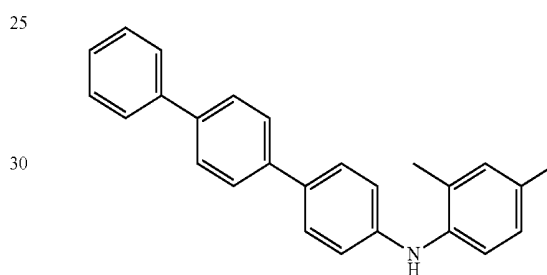
This example illustrates the preparation of Compound E7. Take 0.39 g of the 6,12-dibromochrysene (1 mmol) in glove box and add 0.75 g (2.1 mmol) sec-amine and 0.22 g t-BuONa (2.2 mmol) with 10 mL toluene. Add 0.15 g Pd_2DBA_3 (0.15 mmol), 0.06 g $P(t-Bu)_3$ (0.30 mmol) dissolved in xylenes. Mix and heat in glove box in mantle at $110^\circ C$. under nitrogen for 1 hr. Solution immediately is dark purple but on reaching $\sim 80^\circ C$. it is dark yellow brown with noticeable blue luminescence. Warm at $\sim 80^\circ C$. overnight. Cool and work up by

40

column chromatography eluting with toluene. Product is pale yellow and poorly soluble. The blue luminescent material elutes from the column as a pale yellow solution. Evaporate to low volume and add methanol to ppt yellow solid with blue PL in ~ 0.5 g yield. TLC shows single blue spot running at the solvent front in toluene. Material is modestly soluble in toluene.

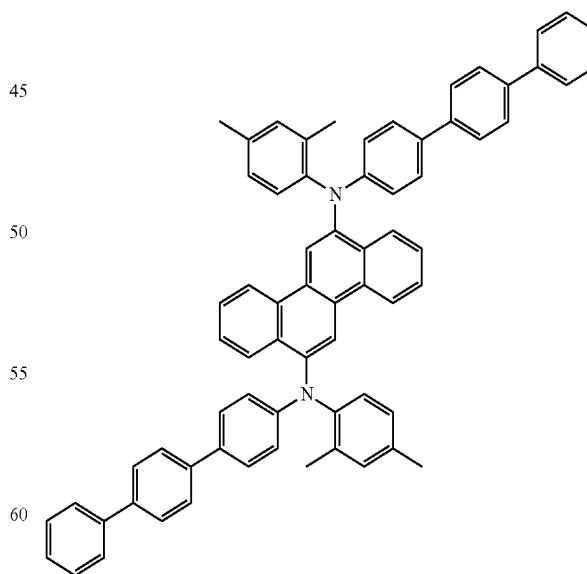


$C_{18}H_{10}Br_2$
Exact Mass: 383.91
Mol. Wt.: 386.08
C, 56.00; H, 2.61; Br, 41.39



$C_{26}H_{23}N$
Exact Mass: 349.18
Mol. Wt.: 349.47
C, 89.36; H, 6.63; N, 4.01

Product:

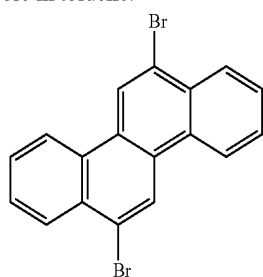


$C_{70}H_{54}N_2$
Exact Mass: 922.43
Mol. Wt.: 923.19
C, 91.07; H, 5.90; N, 3.03

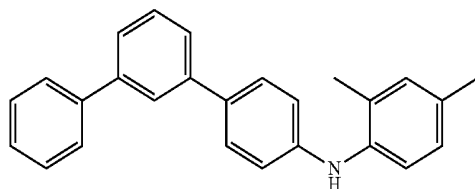
41

Synthesis Example 7

This example illustrates the preparation of Compound E8. Take 0.39 g of the 6,12-dibromochrysene (1 mmol) in glove box and add 0.75 g (2.1 mmol) sec-amine and 0.22 g t-BuONa (2.2 mmol) with 10 mL toluene. Add 0.15 g Pd₂DBA3 (0.15 mmol), 0.06 g P(t-Bu)₃ (0.30 mmol) dissolved in toluene. Mix and heat in glove box in mantle at 110° C. under nitrogen for 1 hr. Solution immediately is dark purple but on reaching ~80° C. it is dark yellow brown with noticeable blue luminescence. Warm at ~80° C. overnight. Cool and work up by column chromatography eluting with toluene. Product is pale yellow and quite soluble. The blue luminescent material elutes from the column as a pale yellowgreen solution. Evaporate to low volume and add methanol to ppt yellow solid with blue PL in ~0.5 g yield. TLC shows single blue spot running at the solvent front in toluene. Material is very soluble in toluene.



C₁₈H₁₀Br₂
Exact Mass: 383.91
Mol. Wt.: 386.08
C, 56.00; H, 2.61; Br, 41.39

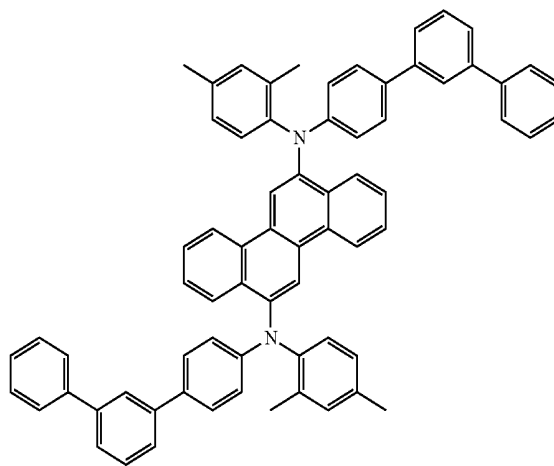


C₂₆H₂₃N
Exact Mass: 349.18
Mol. Wt.: 349.47
C, 89.36; H, 6.63; N, 4.01

42

-continued

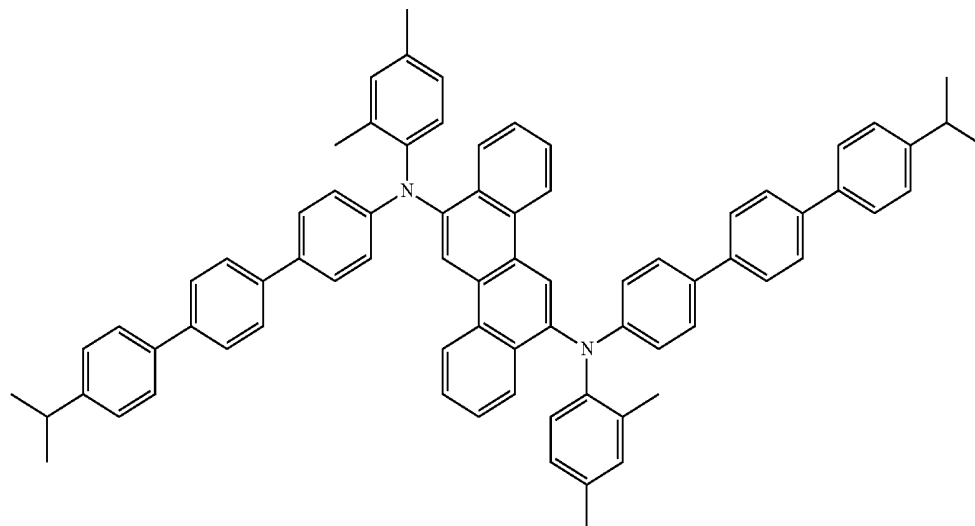
Product:



C₇₀H₅₄N₂
Exact Mass: 922.43
Mol. Wt.: 923.19
C, 91.07; H, 5.90; N, 3.03

Synthesis Example 8

This example illustrates the preparation of Compound E9, N6,N12-bis(2,4-dimethylphenyl)-N6,N12-bis(4'-isopropylterphenyl-4-yl)chrysene-6,12-diamine

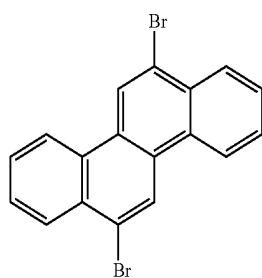


43

In a drybox, 6,12-dibromochrysene (0.54 g, 1.38 mmol), N-(2,4-dimethylphenyl)-N-(4'-isopropylterphenyl-4-yl) amine (1.11 g, 2.82 mmol), tris(tert-butyl)phosphine (0.028 g, 0.14 mmol) and tris(dibenzylideneacetone) dipalladium(0) (0.063 g, 0.069 mmol) were combined in round bottom flask and dissolved in 20 ml of dry toluene. The solution was stirred for a minute and followed by sodium tert-butoxide (0.29 g, 3.03 mmol) and 10 ml of dry toluene. A heating mantle was added and the reaction heated to 60° C. for 3 days. The reaction mixture was then cooled to room temperature and filtered through a 1 inch plug of silica gel and one inch of celite, washing with toluene (500 mL). Removal of volatiles under reduced pressure gave a yellow solid. The crude product was purified further by silica gel column chromatography using a gradient of chloroform in hexanes (0% to 40%). Recrystallization from DCM and acetonitrile yielded 0.540 g (40%) of product as a yellow solid. ¹H NMR (CDCl₃) is consistent with structure.

Synthesis Example 9

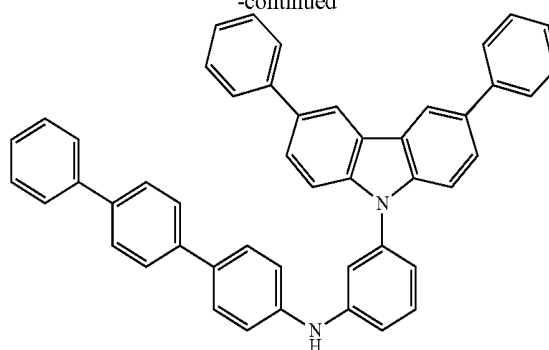
This example illustrates the preparation of Compound E11. Take 0.386 g of 6,12-dibromochrysene (1.0 mmol) in glove box and add 1.35 g (2.1 mmol) sec-amine and 0.22 g t-BuONa (2.2 mmol) with 10 mL xylene. Add 0.15 g Pd₂DBA₃ (0.15 mmol), 0.06 g P(t-Bu)₃ (0.30 mmol) dissolved in xylenes. Mix and heat in glove box in mantle at 110° C. under nitrogen for 1 hr. Solution immediately is dark purple but on reaching ~80° C. it is light yellow brown with noticeable blue luminescence. Warm at ~80° C. for 1 hr. Cool and work up by removing from glove box and filter through a α-alumina plug eluting with DCM. Product is pale yellow and poorly soluble in toluene. Chromatograph eluting with toluene/DCM. The blue luminescent material elutes from the column as a pale yellow solution. Evaporate to low volume and add methanol to ppt yellow solid with blue PL in ~0.5 g yield. Material is poorly soluble in toluene



C₁₈H₁₀Br₂
Exact Mass: 383.91
Mol. Wt.: 386.08
C, 56.00; H, 2.61; Br, 41.39

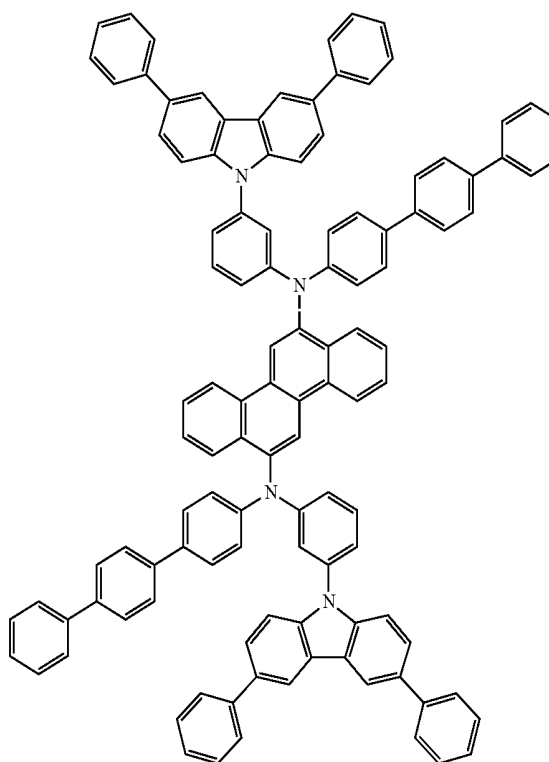
44

-continued



C₄₈H₃₄N₂
Exact Mass: 638.27
Mol. Wt.: 638.80
C, 90.25; H, 5.36; N, 4.39

Product:



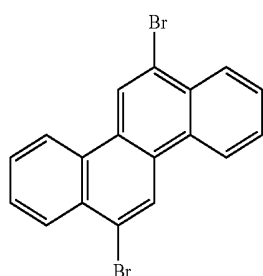
C₁₁₄H₇₆N₄
Exact Mass: 1500.61
Mol. Wt.: 1501.86
C, 91.17; H, 5.10; N, 3.73

Synthesis Example 10

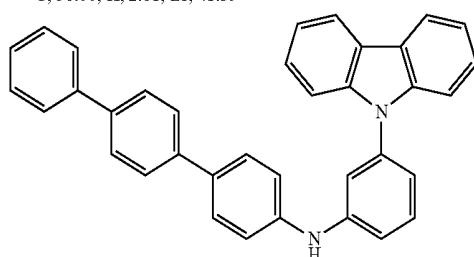
This example illustrates the preparation of Compound E12. Take 0.39 g of 6,12-dibromochrysene (1 mmol) in glove box and add 1.00 g (2.1 mmol) sec-amine (100555-202) and 0.22 g t-BuONa (2.2 mmol) with 10 mL xylenes. Add 0.15 g Pd₂DBA₃ (0.15 mmol), 0.06 g P(t-Bu)₃ (0.30 mmol) dissolved in xylenes. Mix and heat in glove box in mantle at 110° C. under nitrogen for 1 hr. Solution immediately is dark purple but on reaching ~80° C. it is dark yellow brown with noticeable blue luminescence. Cool and work up by column chromatography eluting with DCM. Product is pale yellow and very poorly soluble. The blue luminescent material elutes from the column as a pale yellow solution. Evaporate to low

45

volume and add methanol to ppt pale yellow solid with blue PL in ~0.3 g yield. Material is poorly soluble in toluene.

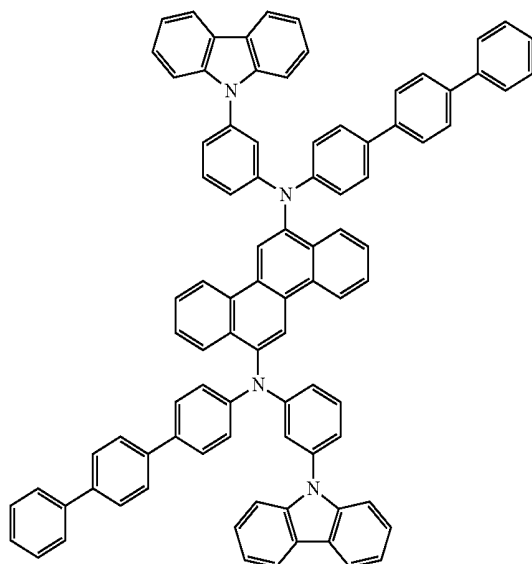


$C_{18}H_{10}Br_2$
Exact Mass: 383.91
Mol. Wt.: 386.08
C, 56.00; H, 2.61; Br, 41.39



$C_{36}H_{26}N_2$
Exact Mass: 486.21
Mol. Wt.: 486.61
C, 88.86; H, 5.39; N, 5.76

Product:

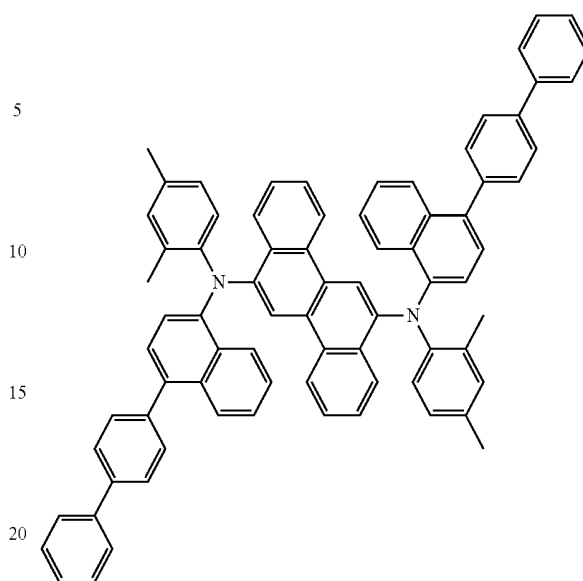


$C_{90}H_{80}N_4$
Exact Mass: 1196.48
Mol. Wt.: 1197.47
C, 90.27; H, 5.05; N, 4.68

Synthesis Example 11

This example illustrates the preparation of Compound E14, N6,N12-bis(4-(biphenyl-4-yl)naphthalen-1-yl)-N6,N12-bis(2,4-dimethylphenyl)chrysene-6,12-diamine.

46

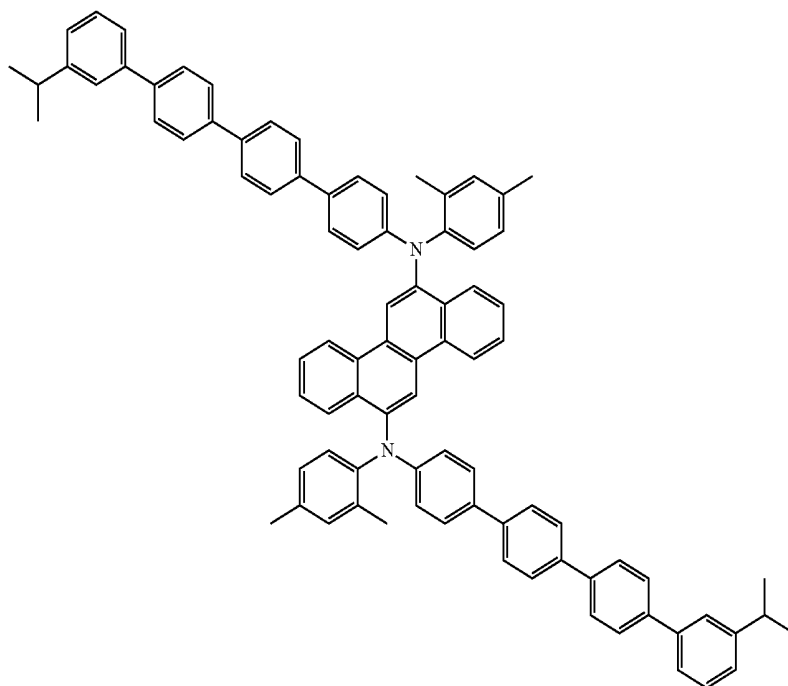


$C_{78}H_{58}N_2$
Exact Mass: 1022.46
Mol. Wt.: 1023.31
C, 91.55; H, 5.71; N, 2.74

In a drybox, 6,12-dibromochrysene (0.39 g, 1.01 mmol), N-(2,4-dimethylphenyl)-N-(4-(biphenyl-4-yl)naphthalen-1-yl)amine (0.84 g, 2.11 mmol), tris(tert-butyl)phosphine (0.061 g, 0.303 mmol) and tris(dibenzylideneacetone) dipalladium(0) (0.138 g, 0.151 mmol) were combined in round bottom flask and dissolved in 25 ml of dry toluene. The solution was stirred for a minute and followed by sodium tert-butoxide (0.21 g, 2.22 mmol) and 10 ml of dry toluene. A heating mantle was added and the reaction heated to 60° C. for 3 days. The reaction mixture was then cooled to room temperature and filtered through a 1 inch plug of silica gel and one inch of celite, washing with toluene (500 mL). Removal of volatiles under reduced pressure gave a yellow solid. The crude product was purified further by silica gel column chromatography using a gradient of chloroform in hexanes (0% to 50%). Recrystallization from DCM and acetonitrile yielded 0.170 g (20%) of product as a yellow solid. ¹H NMR (CDCl₃) is consistent with structure.

Synthesis Example 12

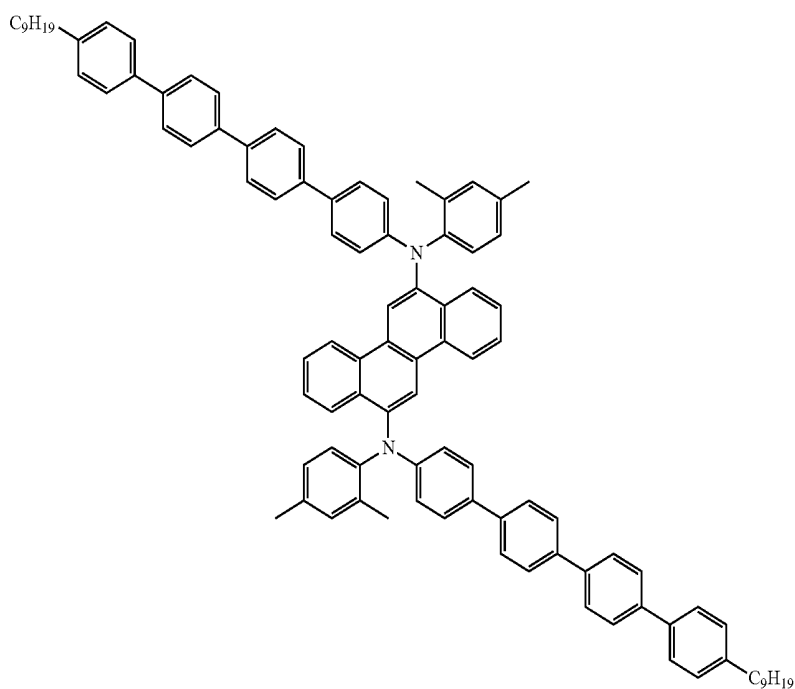
This example illustrates the preparation of Compound E16. In drybox, a round-bottom flask was charged with 6,12-dibromochrysene (220 mg, 1.0 eq), N-(2,4-dimethylphenyl)-3'''-iso-propyl-4,4',4''-quaterphenylamine (570 mg, 2.02 eq), Pd₂(dba)₃ (11 mg, 0.02 eq), P(tert-Bu)₃ (10 mg, 0.08 eq), sodium tert-butoxide (174 mg, 3.0 eq) and m-xylene (15 mL). Reaction mixture was heated at 120° C. for 16 hours. Color of the mixture turned from reddish to yellowish. Progress of the amination was monitored by LC and reaction was stopped after all bromide was consumed. Solution was concentrated via rotoevaporation and washed on a frit with water followed by diethyl ether. The remaining solid was dried under high vacuum. Crude product was purified by column chromatography on a CombiFlash® silica gel column with CHCl₃/hexane gradient, 0-40%. The purest product fraction was collected and concentrated to give 170 mg of product after precipitation with MeOH. LC Purity is 99.99%. Analysis by ¹H NMR indicated that the product was Compound E16.



Synthesis Example 13

This example illustrates the preparation of Compound E17. In drybox, a round-bottom flask was charged with 6,12-dibromochrysene (215 mg, 1.0 eq), N-(2,4-dimethylphenyl)-4'''-n-nonyl-4,4''-quaterphenylamine (651 mg, 2.02 eq), Pd₂(dba)₃ (11 mg, 0.02 eq), P(tert-Bu)₃ (9 mg, 0.08 eq), sodium tert-butoxide (168 mg, 3.0 eq) and m-xylene (10 mL). Reaction mixture was heated at 130° C. for 16 hours. Color of the mixture turned from reddish to greenish. Progress of the

amination was monitored by LC and reaction was stopped after all bromide was consumed. Solution was concentrated via rotoevaporation. Crude product was purified by column chromatography on a Biotage silica gel column with CH₂Cl₂/hexane gradient, 5-40%, followed by another column with CHCl₃/hexane, gradient 5-40%. The purest fractions were further purified by re-precipitation from CH₂Cl₂ with CH₃CN at low temperatures. The resulting solid was filtered off to give 240 mg of product. Analysis by ¹H NMR indicated that the product was Compound E17.

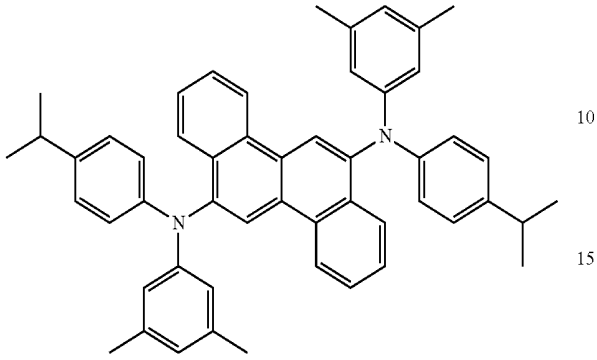


49

50

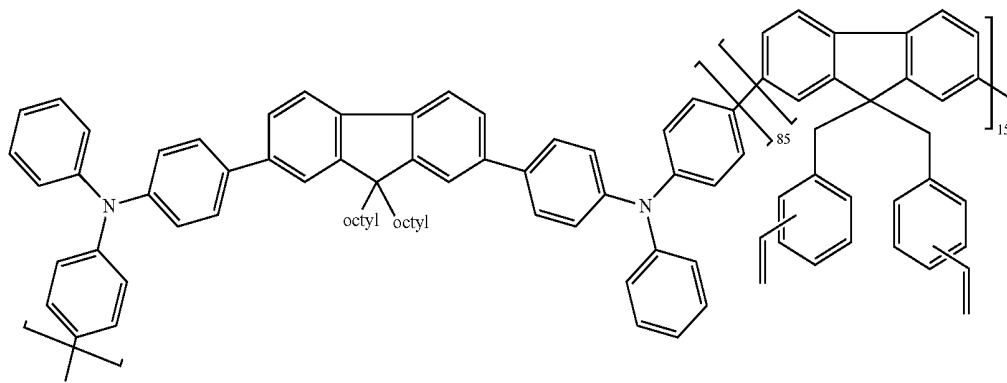
Compounds E3, E10, E13, E15, E18-E28 and comparative Compound A were made using synthetic techniques analogous to those described above.

Compound A 5

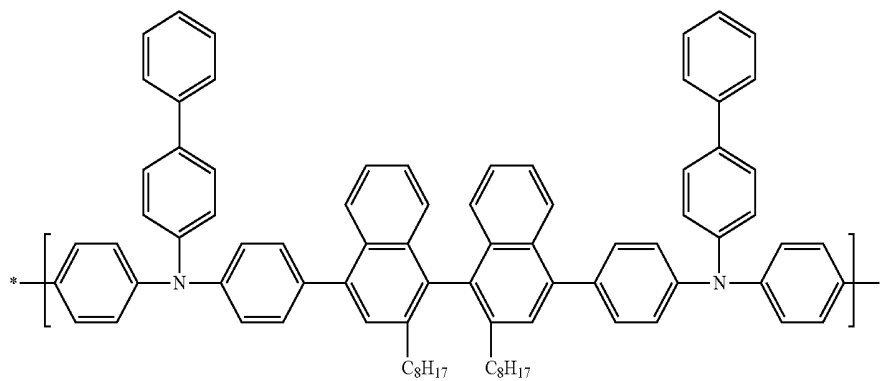


20

Additional Materials:



P1



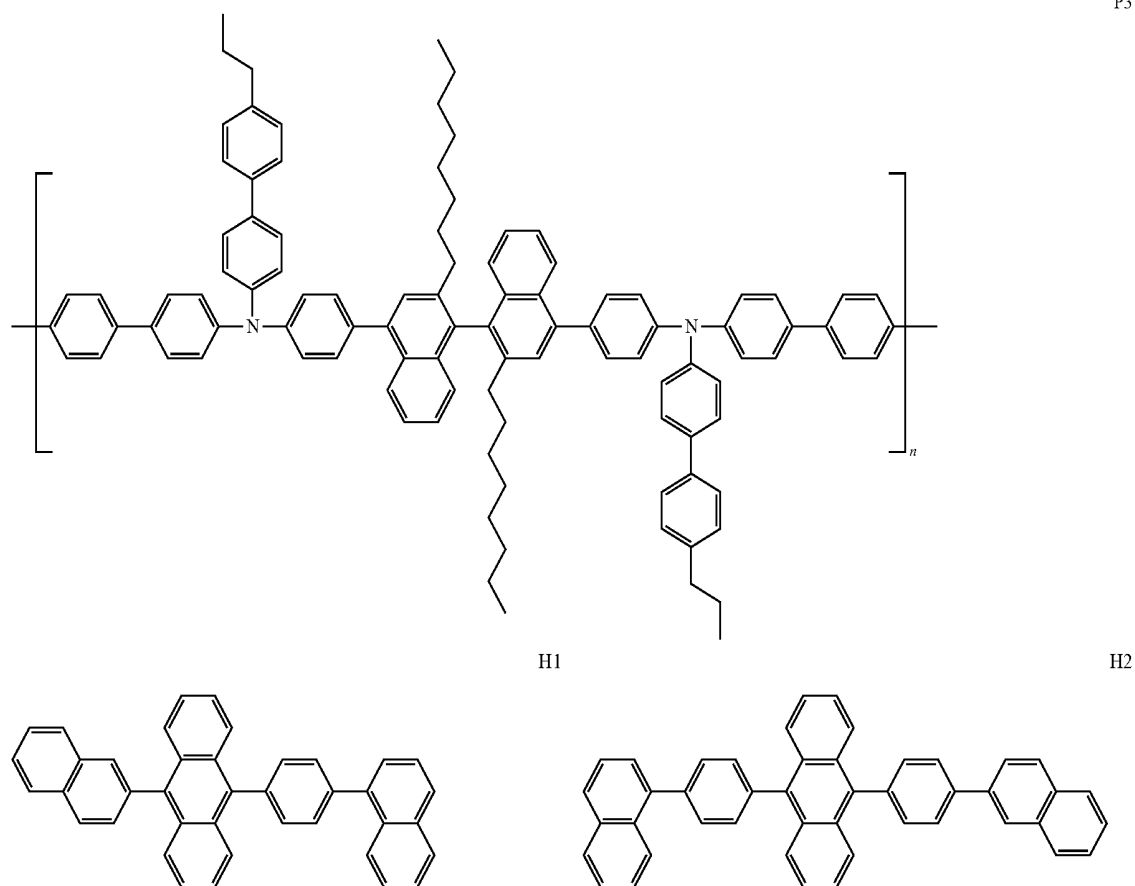
P2

51

52

-continued

P3



H1

H2

Device Examples 1-2 and Comparative A

These examples demonstrate the fabrication and performance of a device having a first structure. The following materials were used:

Indium Tin Oxide (ITO): 50 nm

buffer layer=Buffer 1 (25 nm), which is an aqueous dispersion of an electrically conductive polymer and a polymeric fluorinated sulfonic acid. Such materials have been described in, for example, published U.S. patent applications US 2004/0102577, US 2004/0127637, and US 2005/0205860.

hole transport layer=polymer P1 (20 nm)

photoactive layer=13:1 host H2:dopant (48 nm)

electron transport layer=a metal quinolate derivative (20 nm)

cathode=LiF/Al (0.5/100 nm)

OLED devices were fabricated by a combination of solution processing and thermal evaporation techniques. Patterned indium tin oxide (ITO) coated glass substrates from Thin Film Devices, Inc were used. These ITO substrates are based on Corning 1737 glass coated with ITO having a sheet resistance of 30 ohms/square and 80% light transmission. The patterned ITO substrates were cleaned ultrasonically in aqueous detergent solution and rinsed with distilled water. The patterned ITO was subsequently cleaned ultrasonically in acetone, rinsed with isopropanol, and dried in a stream of nitrogen.

Immediately before device fabrication the cleaned, patterned ITO substrates were treated with UV ozone for 10 minutes. Immediately after cooling, an aqueous dispersion of Buffer 1 was spin-coated over the ITO surface and heated to

remove solvent. After cooling, the substrates were then spin-coated with a solution of a hole transport material, and then heated to remove solvent. After cooling the substrates were spin-coated with the emissive layer solution, and heated to remove solvent. The substrates were masked and placed in a vacuum chamber. The electron transport layer was deposited by thermal evaporation, followed by a layer of LiF. Masks were then changed in vacuo and a layer of Al was deposited by thermal evaporation. The chamber was vented, and the devices were encapsulated using a glass lid, desiccant, and UV curable epoxy. The different structures are summarized in Table 1.

The OLED samples were characterized by measuring their (1) current-voltage (I-V) curves, (2) electroluminescence radiance versus voltage, and (3) electroluminescence spectra versus voltage. All three measurements were performed at the same time and controlled by a computer. The current efficiency of the device at a certain voltage is determined by dividing the electroluminescence radiance of the LED by the current density needed to run the device. The unit is a cd/A. The power efficiency is the current efficiency divided by the operating voltage. The unit is lm/W. The device data is given in Table 2.

The following dopants were used:

Device Example 1: E2

Device Example 2: E3

Comparative Example A: Compound A

Device Examples 3-5 and Comparative B

These examples show the performance of a device made with a second structure having a different host material and a different cathode material.

The devices were made using the procedure of Device Example 1, except that the host was H1, and the cathode was CsF/Al (0.7/100 nm).

The following dopants were used:

Device Example 3: E5

Device Example 4: E6

Device Example 5: E7

Comparative Example B: Compound A

Device Examples 6-9 and Comparative C

These examples show the performance of a device made with a third structure having a different hole transport layer.

The devices were made using the procedure of Device Example 3, except that the hole transport layer was P2.

The following dopants were used:

Device Example 6: E6

Device Example 7: E7

Device Example 8: E8

Device Example 9: E9

Comparative Example C: Compound A

Device Examples 10-11 and Comparative D

These examples show the performance of a device made with a fourth structure having different layer thicknesses and a different hole transport layer.

A device was made using the procedure of Device Example 3, except that the buffer layer=Buffer 1 had a thickness of 50 nm, the hole transport layer was P3, the photoactive layer had a thickness of 40 nm, and the electron transport layer had a thickness of 10 nm.

The dopants used were:

Device Example 10: E9

Device Example 11: E10

Comparative Example D: Compound A

TABLE 1

Device Structure					
Structure	Buffer	HTL	PL	ETL	Cathode
First	25 nm	P1	host = H2	20 nm	LiF/Al
			20 nm		48 nm
Second	25 nm	P1	host = H1	20 nm	CsF/Al
			20 nm		48 nm
Third	25 nm	P2	host = H1	20 nm	CsF/Al
			20 nm		48 nm
Fourth	50 nm	P3	host = H1	10 nm	CsF/Al
			20 nm		40 nm

Buffer layer = Buffer 1 for all

HTL = hole transport layer

PL = photoactive layer

ETL = electron transport layer, which is the same metal quinolate compound for all

TABLE 2

Device Performance							
Device Example	Structure	Dopant	CE [cd/A]	Voltage (V)	CIE [x]	CIE [y]	Lum. $\frac{1}{2}$ Life [h]
1	First	E2	4.5	5.2	0.137	0.154	7560
2	First	E3	4.5	5.3	0.134	0.155	9200
Comp. A	First	Compd. A	4.9	5.2	0.136	0.143	4800
3	Second	E5	5.4	4.6	0.135	0.162	6250
4	Second	E6	5.3	4.6	0.136	0.148	6550
5	Second	E7	5.3	4.6	0.136	0.154	4770

TABLE 2-continued

Device Performance								
Device Example	Structure	Dopant	CE [cd/A]	Voltage (V)	CIE [x]	CIE [y]	Lum. $\frac{1}{2}$ Life [h]	
5	Comp. B	Second	Compd. A	4.9	4.7	0.138	0.134	2700
10	6	Third	E6	6.2	4.7	0.137	0.141	12450
	7	Third	E7	6.4	4.7	0.136	0.147	15640
	8	Third	E8	6.0	4.8	0.138	0.136	11680
	9	Third	E9	6.3	4.7	0.136	0.145	14100
	Comp. C	Third	Compd. A	6.1	4.8	0.139	0.134	6600
15	10	Fourth	E9	6.0	4.4	0.134	0.128	13950
	11	Fourth	E10	5.6	4.4	0.134	0.125	12230
	Comp. D	Fourth	Compd. A	5.9	4.5	0.136	0.115	6000

* All data @ 1000 nits, CE = current efficiency; CIE_x and CIE_y are the x and y color coordinates according to the C.I.E. chromaticity scale (Commission Internationale de L'Eclairage, 1931). Lum. $\frac{1}{2}$ Life is defined as the time in hours for a device to reach one-half the initial luminance.

As can be seen in FIG. 2, the relative lifetime of devices made with the chrysene dopants having Formula I are significantly better than comparative Compound A. The relative lifetime increases dramatically as a and b increase. Relative lifetime is defined as (Lum $\frac{1}{2}$ Life of Example X)/(Lum $\frac{1}{2}$ Life of Comparative Example Y) where Comparative Example Y is the comparative example with the same device structure and materials (other than the dopant). For example, the relative lifetime for Example 1 would be (Lum $\frac{1}{2}$ Life of Example 1)/(Lum $\frac{1}{2}$ Life of Comparative Example A)=7560 h/4800 h=1.58. The relative lifetime for Example 11 would be (Lum. $\frac{1}{2}$ Life of Example 11) divided by (Lum. $\frac{1}{2}$ Life of Comparative Example D)=12230 h/6000 h=2.04. It is unexpected that increasing the number of linearly attached phenyl groups on the nitrogen going from biphenyl, to terphenyl, to quaterphenyl and above, should have this effect.

Note that not all of the activities described above in the general description or the examples are required, that a portion of a specific activity may not be required, and that one or more further activities may be performed in addition to those described. Still further, the order in which activities are listed are not necessarily the order in which they are performed.

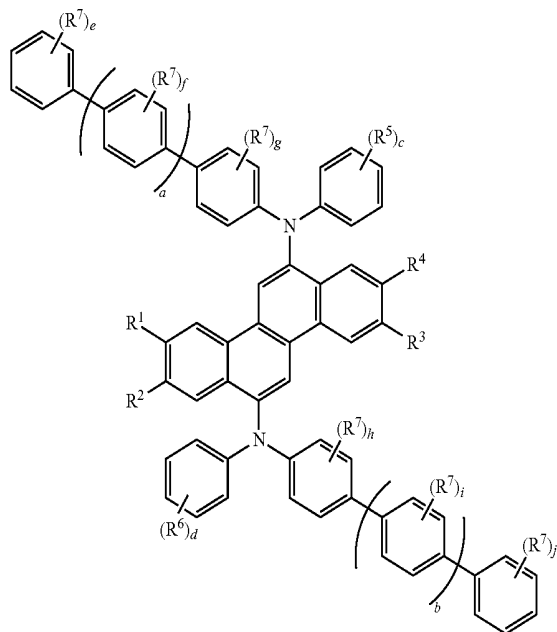
In the foregoing specification, the concepts have been described with reference to specific embodiments. However, one of ordinary skill in the art appreciates that various modifications and changes can be made without departing from the scope of the invention as set forth in the claims below. Accordingly, the specification and figures are to be regarded in an illustrative rather than a restrictive sense, and all such modifications are intended to be included within the scope of invention.

Benefits, other advantages, and solutions to problems have been described above with regard to specific embodiments. However, the benefits, advantages, solutions to problems, and any feature(s) that may cause any benefit, advantage, or solution to occur or become more pronounced are not to be construed as a critical, required, or essential feature of any or all the claims.

It is to be appreciated that certain features are, for clarity, described herein in the context of separate embodiments, may also be provided in combination in a single embodiment. Conversely, various features that are, for brevity, described in the context of a single embodiment, may also be provided separately or in any subcombination. Further, reference to values stated in ranges include each and every value within that range.

What is claimed is:

1. A compound having Formula I:



wherein:

R^1 , R^2 , R^3 and R^4 are the same or different and are selected from the group consisting of H and D;

R^5 and R^6 are the same or different and are selected from the group consisting of D, alkyl groups, silyl groups, m-phenyl, o-phenyl, p-phenyl, m-carbazolyl, and p-carbazolyl;

R^7 is the same or different at each occurrence and is selected from the group consisting of D, alkyl groups, silyl groups, phenyl, and biphenyl, or two adjacent R^7 groups can join together to form a naphthyl or fluorenyl group;

a and b are the same or different and are an integer from 1-3;

c and d are the same or different and are an integer from 1-5;

f, g, h, and i, are the same or different at each occurrence and are an integer from 0-4; and

e and j are the same or different at each occurrence and are an integer from 0-5.

2. The compound of claim 1, wherein each of R^1 through R^4 is H.

3. The compound of claim 1, wherein R^5 and R^6 are hydrocarbon alkyl groups having 1-6 carbon atoms.

4. The compound of claim 1, wherein $c=d=1$ or 2.

5. The compound of claim 1, wherein R^5 and R^6 are aromatic groups selected from the group consisting of o-phenyl, m-phenyl, and m-carbazolyl groups.

6. The compound of claim 1, wherein R^7 is a hydrocarbon alkyl group having 1-10 carbon atoms.

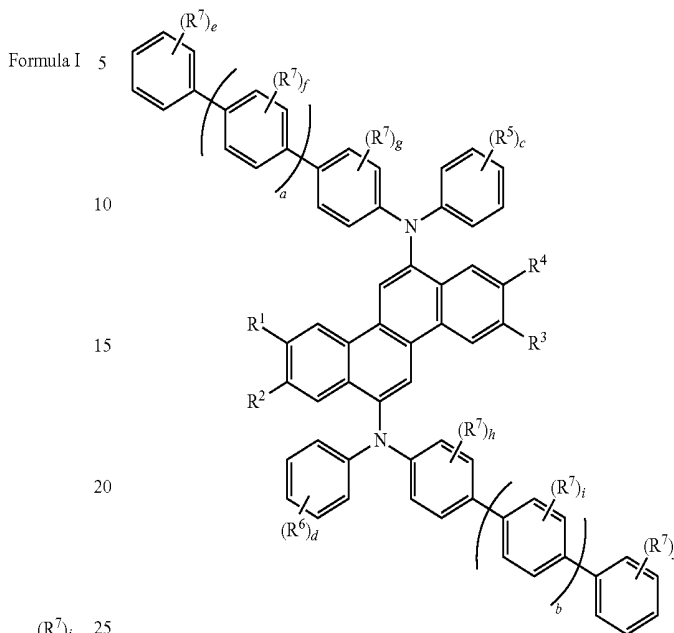
7. The compound of claim 1, wherein $e=f=g=h=i=j=0$.

8. The compound of claim 1, wherein $a=b$.

9. The compound of claim 1, wherein $a=b=1-3$.

10. An organic electronic device comprising a first electrical contact layer, a second electrical contact layer, and at least one active layer therebetween, wherein the active layer comprises a compound having Formula I:

Formula I



wherein:

R^1 , R^2 , R^3 and R^4 are the same or different and are selected from the group consisting of H and D;

R^5 and R^6 are the same or different and are selected from the group consisting of D, alkyl groups, silyl groups, m-phenyl, o-phenyl, p-phenyl, m-N-carbazolyl, and p-N-carbazolyl;

R^7 is the same or different at each occurrence and is selected from the group consisting of D, alkyl groups, silyl groups, phenyl, and biphenyl, or two adjacent R^7 groups can join together to form a naphthyl or fluorenyl group;

a and b are the same or different and are an integer from 1-3;

c and d are the same or different and are an integer from 1-5;

f, g, h, and i, are the same or different at each occurrence and are an integer from 0-4; and

e and j are the same or different at each occurrence and are an integer from 0-5.

11. The device of claim 10, wherein R^1 through R^4 is H.

12. The device of claim 10, wherein R^5 and R^6 are hydrocarbon alkyl groups having 1-6 carbon atoms.

13. The device of claim 10, wherein R^5 and R^6 are aromatic groups selected from the group consisting of o-phenyl, m-phenyl, and m-carbazolyl groups.

14. The device of claim 10, wherein R^7 is a hydrocarbon alkyl group having 1-10 carbon atoms.

15. The device of claim 10, wherein $a=b$.

16. The device of claim 10, wherein $a=b=1-3$.

17. The device of claim 10, wherein the compound of Formula I is selected from E1 through E28.

18. The device of claim 10, wherein the active layer is a photoactive layer and further comprises a host material.

19. The device of claim 18, further comprising a buffer layer between the first electrical contact layer and the active layer.

20. The device of claim 19, wherein the buffer layer comprises at least one electrically conductive polymer and at least one fluorinated acid polymer.

* * * * *

专利名称(译)	用于发光应用的Chrysene化合物		
公开(公告)号	US9260657	公开(公告)日	2016-02-16
申请号	US13/265025	申请日	2010-05-19
[标]申请(专利权)人(译)	纳幕尔杜邦公司		
申请(专利权)人(译)	E.I.DU PONT DE NEMOURS AND COMPANY		
当前申请(专利权)人(译)	E·I·杜邦和公司		
[标]发明人	WU WEISHI HERRON NORMAN ROSTOVTSEV VSEVOLOD MERLO JEFFREY A GAO WEIYING		
发明人	WU, WEISHI HERRON, NORMAN ROSTOVTSEV, VSEVOLOD MERLO, JEFFREY A. GAO, WEIYING		
IPC分类号	H01L51/54 C07D209/82 H01L51/46 C09B57/00 C07D209/86 C07C211/61 C09K11/06 H01L51/00		
CPC分类号	C09K11/06 C07C211/61 C07D209/86 C09B57/00 C09B57/001 C09B57/008 H01L51/006 C07C2103/48 C09K2211/1007 C09K2211/1014 H01L51/0054 C07C2603/48		
优先权	61/179405 2009-05-19 US		
其他公开文献	US20120037898A1		
外部链接	Espacenet USPTO		

摘要(译)
 本发明涉及可用于电致发光应用的chrysene化合物。它还涉及其中活性层包含这种化合物的电子器件。

